

Jack Estimating and Order Form



All Yellow highlighted fields are required for quote and lead time

Jack Order Form Pricing (Passenger/Class A Loading Only)

Version 03/12/26

Company: Date:

Quote Expiration:

Job name: By:

Required Existing Data

Passenger/Class A Loading Only. Contact tkepareparts@tkelevator.com if a different Class exists.

Enter Net Travel (inches) inches

Enter Capacity LBS. Calculated Gross Load on Jack

Enter Car Weight LBS.

Passenger or Freight

Existing Speed FPM Calculated Up Speed based on Jack selection below:

Existing Jack Plunger/Piston Diameter inches FPM

Is this an Existing Dover/TKE Jack?

Include Existing Dover/TKE Job #^

Compatible Jacks And Available Options

Single Conventional Jacks with Single Bearings

Enter Your Replacement Jack → SW= Standard Wall, HW = Heavy Wall,
EHW = Extra Heavy Wall

Oversized Cylinder?

Enter # of Sections Required:
Number of sections is required for pricing

Platen Required?

Jack Casing Protection? PVC Buffers?

Pit Channels? Required

Total:

Jack and pit channels:

Buffers:

If your desired jack is not listed, please contact tkepareparts@tkelevator.com

New Jack Data

Plunger/Piston OD inches Jack will be provided in Section(s)

Plunger/Piston Thickness inches

Cylinder OD inches Top overtravel

Coupling OD inches Bottom Overtravel

Flange OD inches Total Travel inches

HDPE Cylinder OD^ inches

PVC Cylinder OD^ inches Plunger/Piston Weight* LBS.

PVC Coupling OD^ inches

Minimum pressure PSI Cylinder length* feet

Max working pressure PSI Section Length* feet

Approximate Max Section Length* feet

* Approximate dimensions (will be confirmed at time of Order)

^ If applicable

Jacks Order Form- Survey



Date: _____

All Yellow highlighted fields are required for quote and lead time

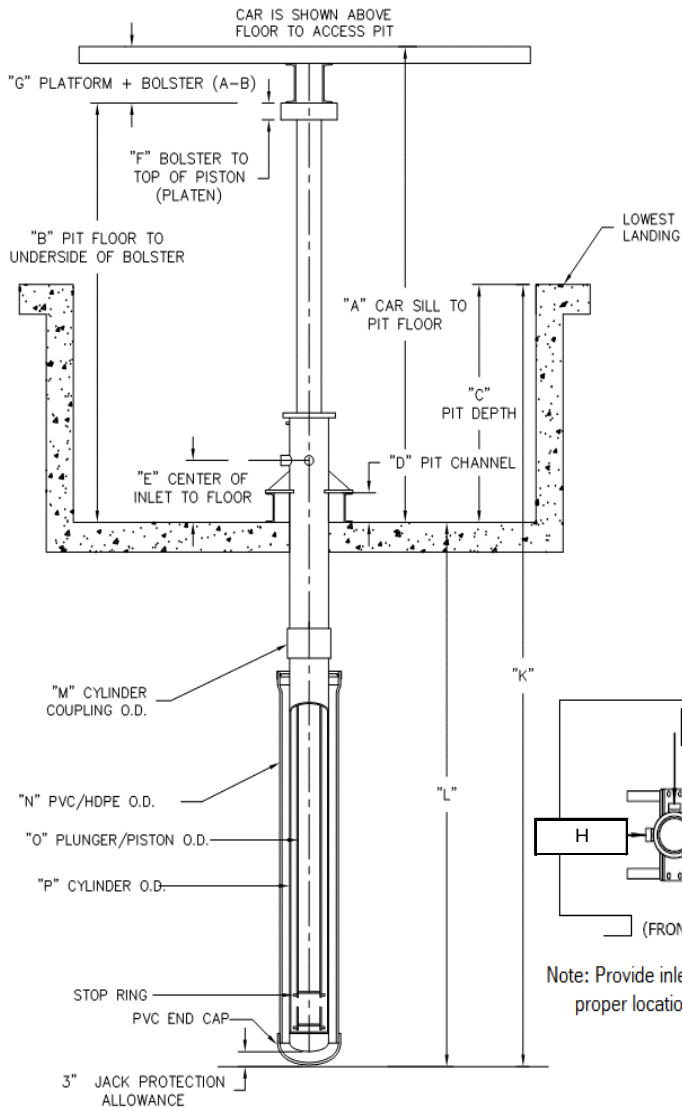
Jacks Order Form Survey

Company: _____ Existing Dover/TKE Job #: _____
 Job name: _____ By:By: _____
 Ship to Address: Purchase Order Number:

Existing Data

Net Travel	<input type="text"/>	inches	Existing Speed	<input type="text"/>	FPM
Capacity	<input type="text"/>	LBS.	Existing Jack Diameter	<input type="text"/>	
Max Gross Load On Jack	<input type="text"/>	LBS.	Is this an Existing Dover/TKE Jack?	<input type="text"/>	
Passenger or Freight	<input type="text"/>		Calculated Up Speed	<input type="text"/>	FPM
			Down Heavy Speed	<input type="text"/>	FPM

Required Survey Information for Order

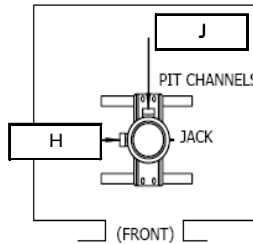


Top Over Travel*	<input type="text"/>	inches
Bottom Runby	<input type="text"/>	inches
Buffer Stroke**	<input type="text"/>	inches
Bottom Over Travel	<input type="text"/>	inches
Buffer Strike Plate (thickness)	<input type="text"/>	inches

* Standard is 6 inches

** Code required based on Down Heavy Speed

A	<input type="text"/>	inches
B	<input type="text"/>	inches
C	<input type="text"/>	inches
D	<input type="text"/>	inches
E	<input type="text"/>	inches
F	<input type="text"/>	inches
G	<input type="text"/>	inches
J	<input type="text"/>	inches
H	<input type="text"/>	inches
Pit Channel Length	<input type="text"/>	inches
Bolster thickness	<input type="text"/>	inches



Note: Provide inlet diameter in proper location (H or J)

K	<input type="text"/>	inches
L	<input type="text"/>	inches
M	<input type="text"/>	inches
N	<input type="text"/>	inches
O	<input type="text"/>	inches
P	<input type="text"/>	inches

Dimensions "K" and "L" are estimates.

Send completed Excel form to tkspareparts@tkelevator.com