



VERTICAL EXPRESS

Signal Fixtures

Traditional
Vandal Resistant
Signa4

Every attempt has been made to ensure that this documentation is as accurate and up-to-date as possible. However, Vertical Express assumes no liability for consequences, directly or indirectly, resulting from any error or omission. The material contained herein is subject to revision. Please report any problems with this manual to Vertical Express, P.O. Box 2019, Memphis, Tennessee 38101.

Vertical Express • P.O. Box 2019 • Memphis, Tennessee 38101

© 2021 Vertical Express. All rights reserved.
Published September, 2021
Third Edition
Printed in the United States of America

Manual Number: 89604 v.3.0

Contents

Safety Precautions	3
General Safety	3
Electrical Safety	3
Mechanical Safety	4
Static Protection Guidelines	5
Access and Egress Procedures	6

Car Signal Fixtures

Column Type Car Operating Panel (COP)	C-3
8501AB Overview	C-3
8501AB Configurations	C-4
Wraparound Car Operating Panel (COP)	C-5
8501AD Overview	C-5
8501AD Configurations	C-6
Full Width Car Operating Panel (COP)	C-7
8501AE Overview	C-7
8501AE Configurations	C-8
Position Indicators	C-9
Car Riding Lantern Assemblies	C-10
Fire Service Assemblies	C-11
Audible Fixtures	C-13
Keyswitches	C-14
Keyswitch List	C-15
Keycore Bezels 128BV_	C-18
Keycore Bezels 128BP_	C-19
Keyswitch Bezels 128BF_	C-22

Hall Signal Fixtures

Traditional or Vandal Hall Station Assembly	H-3
8503AF1 Overview	H-3
Signa4 Hall Station Assembly	H-4
8503AN_ Overview	H-4
Surface Mount Hall Station Assembly	H-5
176CY_ Overview	H-5

Contents

(continued)

Fusion Hall Station Assembly	H-6
176DL_ Overview	H-6
Hall Lantern Assemblies	H-7
TRADITIONAL	H-7
VANDAL RESISTANT	H-7
SIGNA4	H-7
FUSION	H-7
90° SURFACE MOUNT	H-8
Position Indicator (PI) Assemblies	H-9
Combination Hall Lantern & PI Assemblies	H-10
Traditional Fixtures	H-10
Vandal Resistant Fixtures	H-12
Fusion Fixtures	H-14
90° Surface Mount Fixtures	H-14
Signa4 Fixtures	H-14
Assembly Numbers	H-15

Pushbutton Assemblies

Jewel Pushbutton Assemblies	P-3
Jewel Assemblies List	H-5
Vandal Resistant Pushbutton (680AX8)	H-6
Traditional Pushbutton (680BX001)	H-7
Destination Complete (680BX002)	H-8

Safety Precautions

IMPORTANT!

Read this page before any work is performed on elevator equipment. The procedures contained in this manual are intended for the use of qualified elevator personnel. In the interest of your personal safety and the safety of others, do not attempt any procedure that you are not qualified to perform.

All procedures must be accomplished in accordance with the applicable rules in the latest edition of the National Electrical Code, the latest edition of ASME A17.1, and any governing local codes.

Terms in This Manual

! CAUTION

CAUTION statements identify conditions that may result in damage to the equipment or other property if improper procedures are followed.

! WARNING

WARNING statements identify conditions that may result in personal injury if improper procedures are followed.

General Safety

! CAUTION

Before applying power to the controller, check that all manufacturing wire connections are tight on relays, contactors, fuse blocks, resistors, and terminals on boards and DIN rail terminals. Connections loosened during shipment may cause damage or intermittent operation.

Other specific warnings and cautions are found where applicable and do not appear in this summary. See the *Employee Safety and Accident Prevention Program Manual* and the *Elevator Industry Field Employees' Safety Handbook* for electrical equipment safety information on installation and service.

Electrical Safety

All wiring must be in accordance with the National Electrical Code and be consistent with all state and local codes.

Use the Proper Fuse

To avoid fire hazards, use only the correct type fuse, voltage, and current rating. See the job specific drawings sheet (Power Supplies) for fusing information.

Electric shocks can cause personal injury or loss of life. Circuit breakers, switches, and fuses may not disconnect all power to the equipment. Always refer to the wiring diagrams. Whether the AC supply is grounded or not, high voltage will be present at many points.

Electrical Safety (continued)

Printed Circuit Boards

Printed circuit boards may be damaged if removed or installed in the circuit while applying power. Before installation and/or removing printed circuit boards, secure all power. Always store and ship printed circuit boards in separate static bags.

Mainline Disconnect

Unless otherwise directed, always Turn OFF, Lockout, and Tagout the mainline disconnect to remove power from elevator equipment. Before proceeding, confirm that the equipment is de-energized with a volt meter. Refer to the *Employees' Safety and Accident Prevention Program Manual* for the required procedure.

When Power Is On

To avoid personal injury, do not touch exposed electrical connections or components while power is ON.

Test Equipment Safety

Always refer to manufacturers' instruction book for proper test equipment operation and adjustments.

Buzzer-type continuity testers can damage electronic components. Connection of devices such as voltmeters on certain low level analog circuits may degrade electronic system performance. Always use a voltmeter with a minimum impedance of 1 M Ohm/Volt. A digital voltmeter is recommended.

Mechanical Safety

See the *Employees' Safety and Accident Prevention Program Manual* and the *Elevator Industry Field Employees' Safety Handbook* for mechanical equipment safety information on installation and service.

Power Unit Fluid System

If working on the power unit fluid system, the static car weight is applying pressure to the jack and valve system and this stored pressure is present at the power unit.

Before working on any component of the power unit, do one of the following:

- Manually lower the car onto the buffers to relieve the stored pressure.
- Close the machine room oil line shutoff valve, and then release the power unit pressure by momentarily opening the manual lowering adjuster valve.

Arrival of Equipment

Receiving

Upon arrival of the equipment, inspect it for damage. Promptly report all visible damage to the carrier. All shipping damage claims must be filed with the carrier.

Storing

During storage in a warehouse or on the job site, precautions should be taken to protect the equipment from dust, dirt, moisture, and temperature extremes.

Static Protection Guidelines

IMPORTANT!

Read this page before working with electronic circuit boards.

Elevator systems use electronic circuit boards to control various functions of the elevator. These boards have components that are extremely sensitive to electrostatic voltage, which can cause board damage or failure.

Proper handling and shipping of boards is important to ensure their reliability and long-term operation. For this reason, manufacturing bases warranty decisions on the guidelines below.

Handling

- Store boards in separate, sealed, anti-static bags until time for installation.
- When handling boards, wear an anti-static wrist strap with ground wire. Acceptable straps are available through local electronics parts suppliers. Typical anti-static wrist straps are intended for applications below 240 VAC.
- Do not place boards on any surface without adequate static protection.
- Handle boards only by their edges using proper anti-static techniques. Avoid touching components, traces, and connectors.
- Take extra care when handling individual components, such as integrated chips, metal oxide semiconductors, and field-effect transistors. These components can be destroyed with as little as 30 volts of electrostatic discharge.


Shipping

- Complete the included board discrepancy sheet.
- Any board returned to manufacturing must be packaged in a closed, sealed anti-static bag designed for the board, and packaged in a sturdy protective shipping carton.
- Clear bubble wrap and Styrofoam are unacceptable packing materials.

Failure to adhere to the above guidelines will void the board warranty.

Access and Egress Procedures


The access and egress procedures that are used entering the hoistway determine whether or not power is needed to perform the required task(s). If not, Turn OFF, Lockout, and Tagout the mainline disconnect.

 **WARNING** DO NOT stand on the car top emergency access cover.

Car Top Safety

Safety Precautions When Accessing/Egressing Car Tops

- Before opening the hoistway door, ensure that the correct hoistway has been selected and that the car is at the proper floor (to avoid a fall hazard).
- Access car tops from the top terminal landing whenever possible.
- Never access a hoistway, unless a reliable method of controlling the car has been determined.
- Locate the emergency stop switch.
- Before accessing the car top, place the stop switch in the STOP position, and confirm the proper operation.
- Locate a safe refuge area.
- Always maintain control of the hoistways doors during access/egress.
- Fall protection is to be used when a fall hazard exists. The only exception to this is when routine maintenance is being performed on top of complete, operational elevator cars, Do Not use fall protection where there is a greater risk of entanglement.
- When opening hoistway doors from the car top, do so slowly, so that no one steps in from the landing thinking a car has arrived.
- Observe overhead clearances.
- Use extra care when working on car tops that are curved, domed, or located in unenclosed hoistways.

 **WARNING** DO NOT turn the following switches to Automatic Operation until the hoistway door interlock is open—and remains open—and the hoistway is empty.

- When egressing the hoistway/car top, ensure that the stop switch is in the STOP position, and that the inspection switch is on Inspection Operation.

Access and Egress Procedures (continued)

Safety Precautions When Working on Car Tops



DO NOT attach electrical cords on the car or counterweight ropes.

- Before beginning work, check the car top for oil or grease, and clean as required.
- Locate the position and counterweights of the car being accessed, as well as any other cars/counterweights in the vicinity. Take appropriate measures to avoid hazards.
- Verify proper operation of the top-of-car inspection operating buttons. Where outlets are provided, use a grounded, portable light with a suitable, non-conductive; or use a grounded lamp guard and reflector.

Pit Safety

Before entering a pit, ensure that every employee is aware of the hazards. Some common hazards are:

- Recognized refuge space
- Inadequate lighting
- Improper access
- Tripping hazards
- Improper use of pit ladders
- Moisture/water/fluid
- Moving equipment

Safety Precautions Before Entering a Pit

Take appropriate steps to minimize the following hazards and any others that are identified, such as:

- Locate the position of the car being accessed, as well as any other cars in the vicinity.
- Before accessing the pit, the car **MUST** be located high enough to allow the placement of the pit prop pipe stands to be inserted into the buffers.
- Once the pit is initially accessed, the pit props must be installed and the oil line shutoff valve closed to prevent car movement.
- Obtain control of the car.
- Identify a refuge space.
- If movement of the elevator is not needed to complete the work being performed, Turn OFF, Lockout, and Tagout procedures are required.

Access and Egress Procedures (continued)

Safety Precautions Before Entering a Pit (continued)

- If notified by the building owner or representative that the pit and/or hoistway has been classified as a Permit Required Confined Space (this notification could be verbal or the pit/hoistway may be labeled), contact the appropriate person for authorization. In either case, do not enter the pit/hoistway until authorization is received.

Safety Precautions When Working In Pits

- Before entering a pit, test and verify the door lock circuit and stop switch circuit.
- Ensure that all portable lights and tools are connected through a ground fault (GFCI).
- Take care to protect all lighting from damage.
- DO NOT work in a pit with standing water.
- Before climbing, always examine shoes for fluid/grease.
- Use both hands when working with ladders and also when accessing and egressing a pit.
- Be aware of moving equipment (e.g., pump, motors, belts, and sheaves), and ensure that clothing and hands cannot get caught in them.
- Avoid smoking or the use of open flames in the pit.

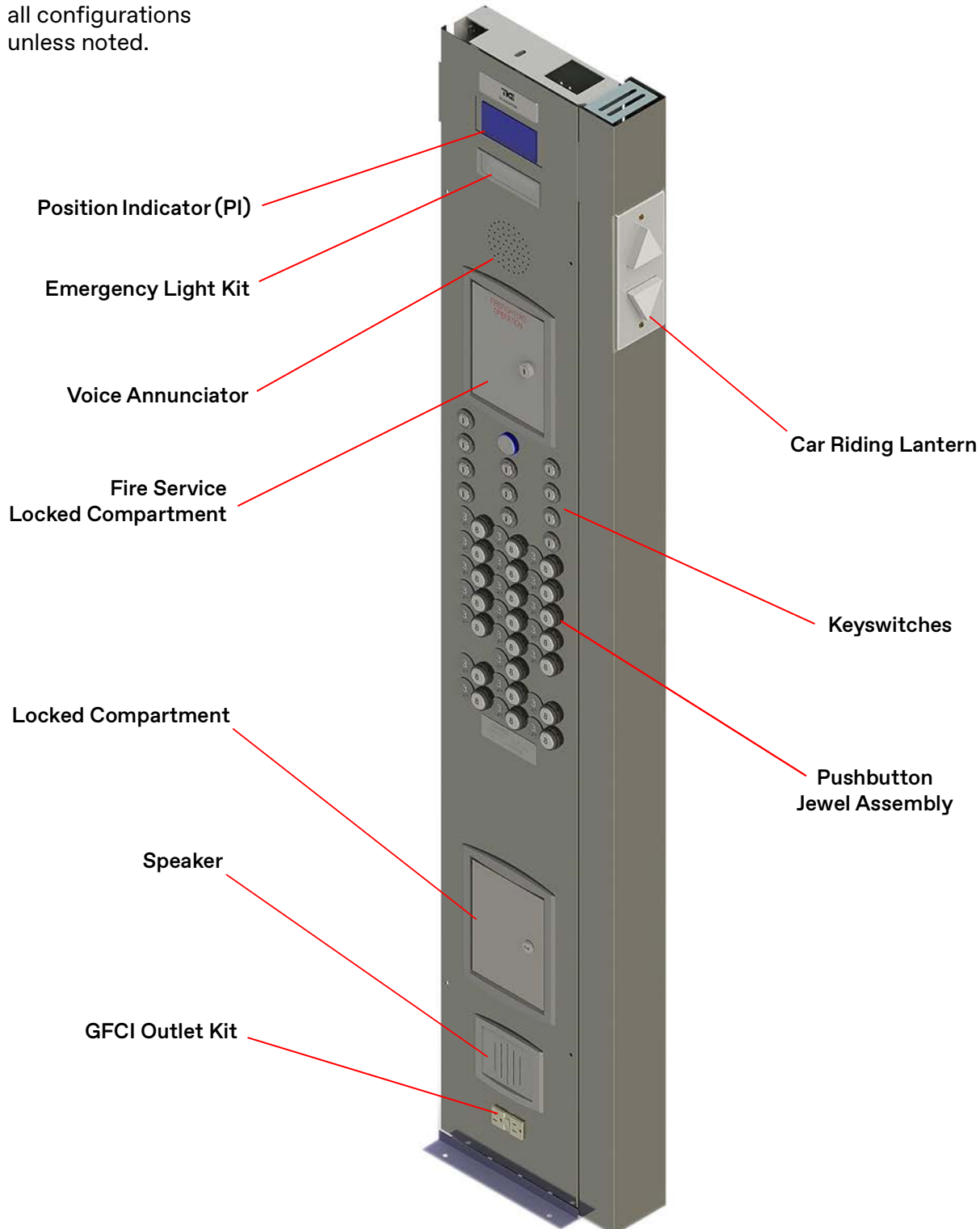
CAR SIGNAL FIXTURES

CAR SIGNAL FIXTURES

Column Type Car Operating Panel (COP)

8501AB Overview

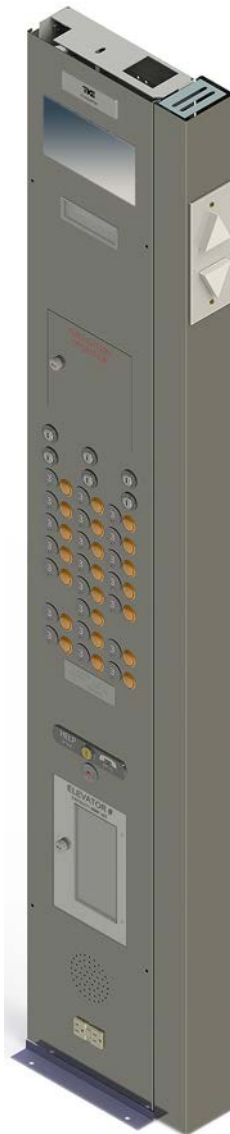
Left hand shown for
all configurations
unless noted.



8501AB Configurations



**Traditional
with Two-Way
Communication
8502JD003**



**Vandal Resistant
with Two-Way
Communication
8502JF003**

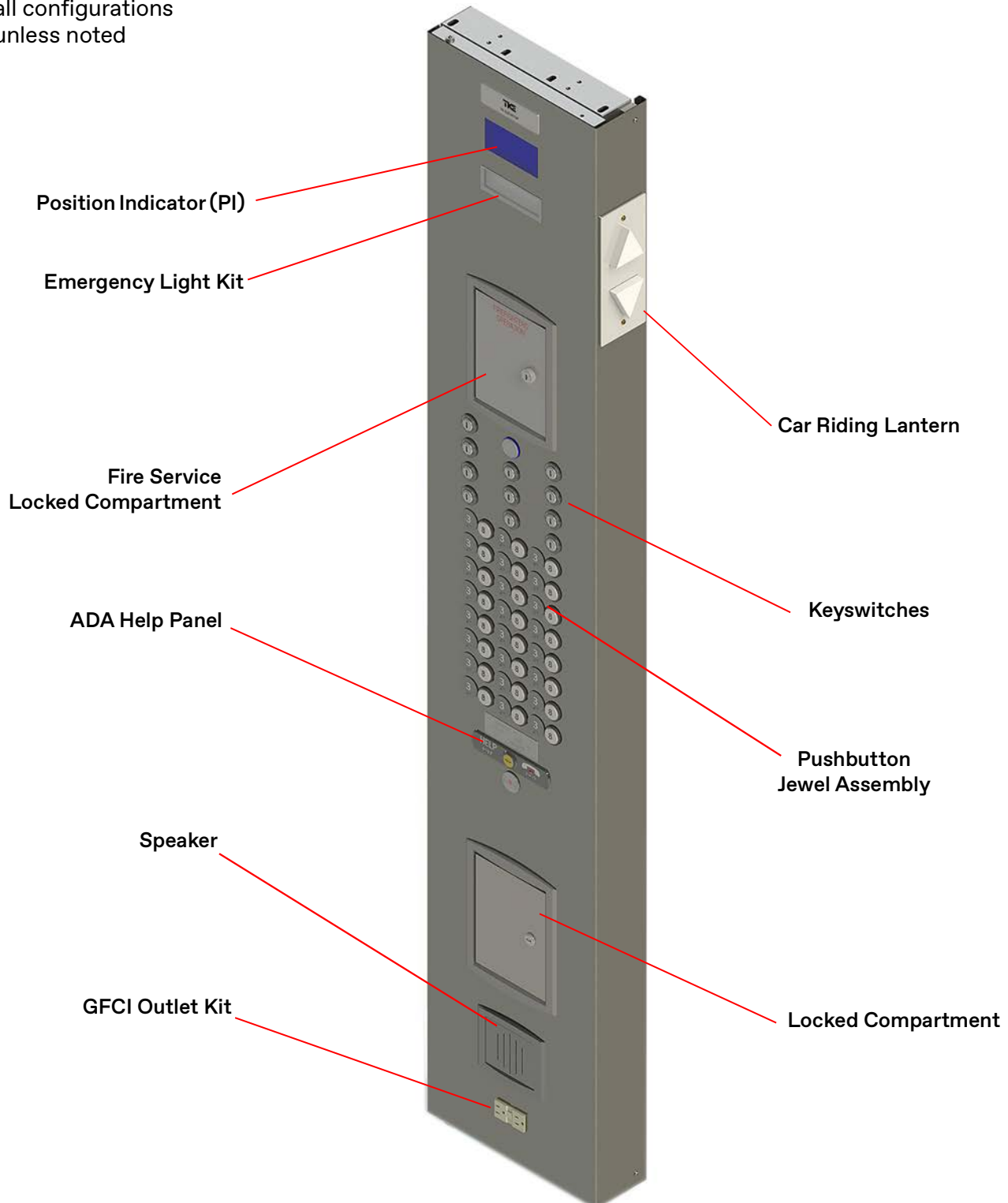


**Destination
Complete
with Two-Way
Communication
8502JK003**

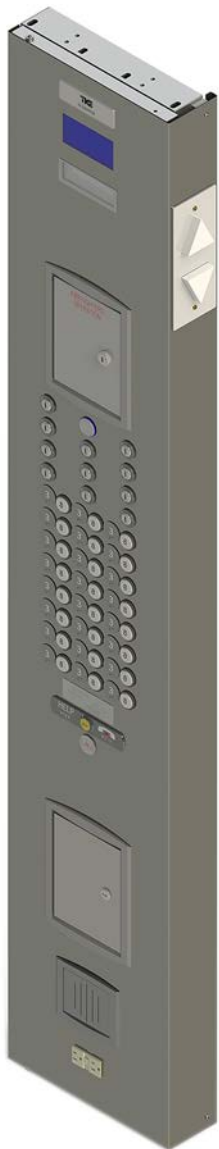
Wraparound Car Operating Panel (COP)

8501AD Overview

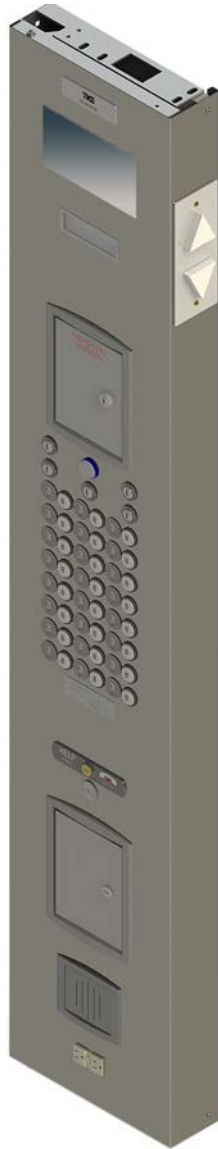
Left hand shown for
all configurations
unless noted



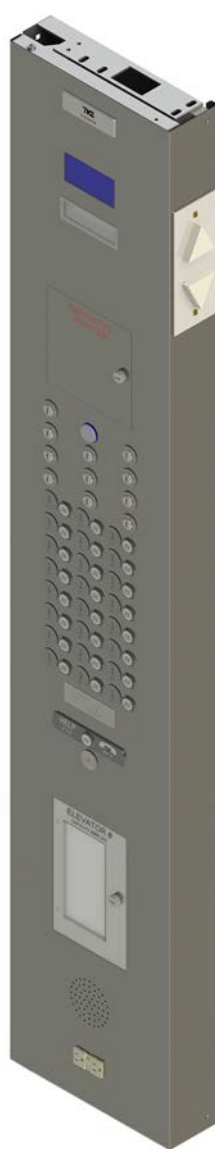
8501AD Configurations



**Traditional
8502AR003**



**Traditional
with Two-Way
Communication
8502JY003**



**Vandal
Resistant
8502AT003**



**Destination
Complete
with Two-Way
Communication
8502KF003**

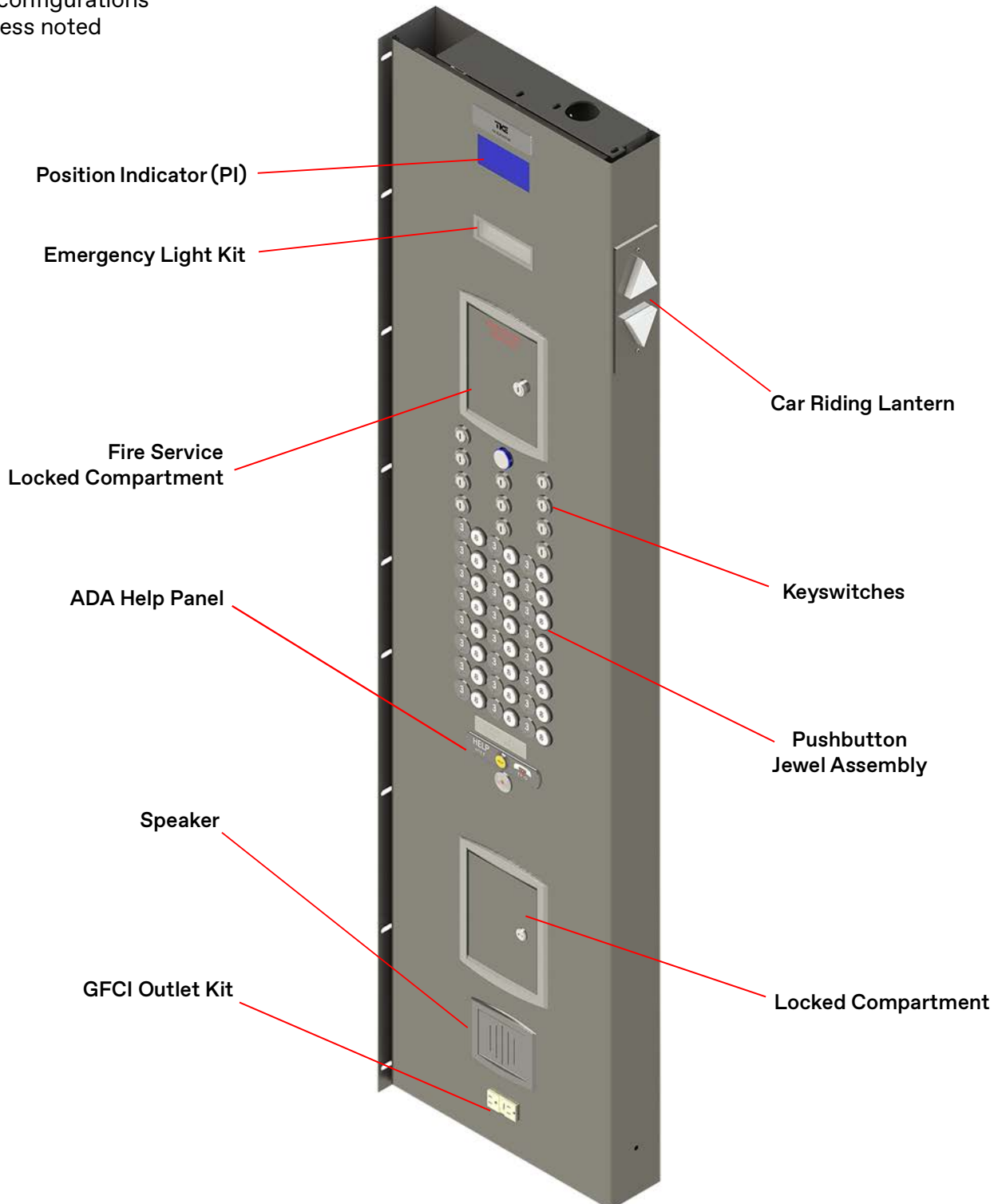


**Signa4
8502AV003**

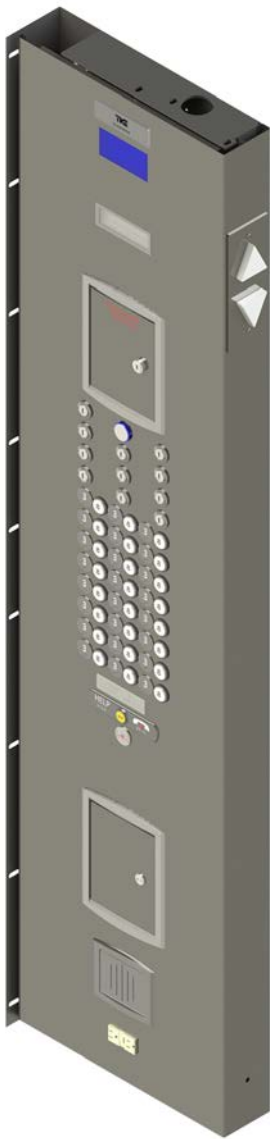
Full Width Car Operating Panel (COP)

8501AE Overview

Left hand shown for
all configurations
unless noted



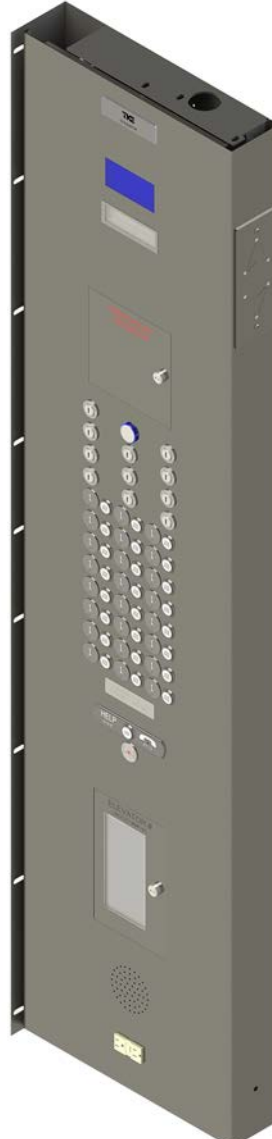
8501AE Configurations



Traditional
8502BF003



Signa4
8502BE003



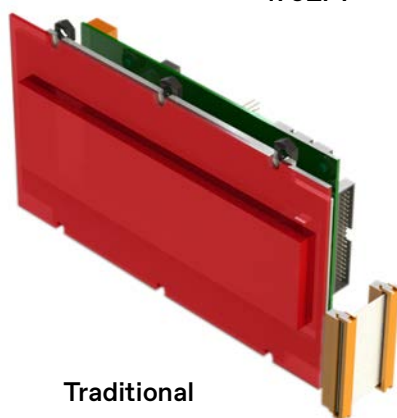
**Vandal
Resistant**
8502BG003



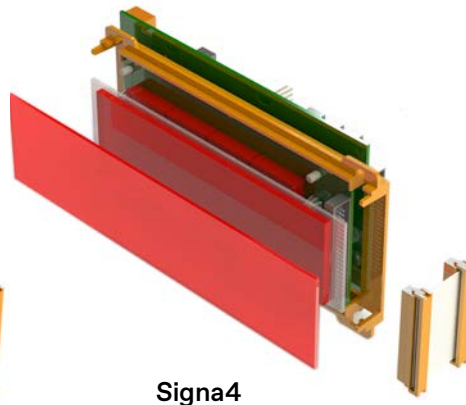
**Destination
Complete**
8502BJ003

Position Indicators

1" LON Dot Matrix PI
178LP7

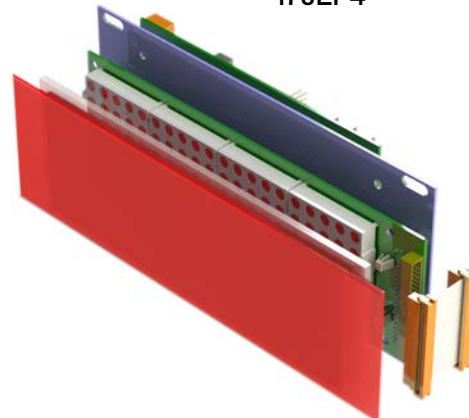


Traditional

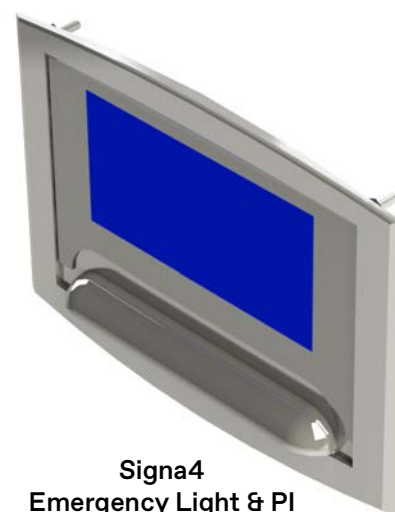
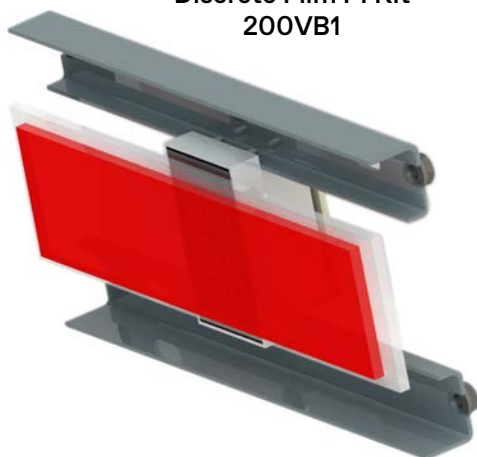


Signa4

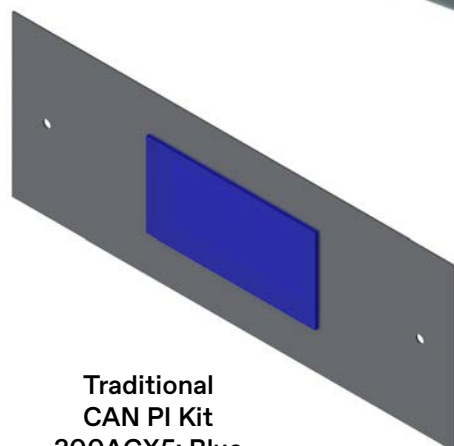
2" LON Dot Matrix PI
178LP4



Discrete Film PI Kit
200VB1



Signa4
Emergency Light & PI
176CG3



Traditional
CAN PI Kit
200AGX5: Blue
200AGX6: Blue
200AGX7: Red
200AGX8: Red



Signa4
PI Kit
200AFB2

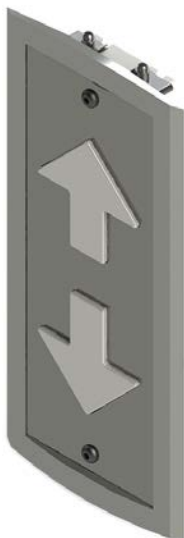
Car Riding Lantern Assemblies



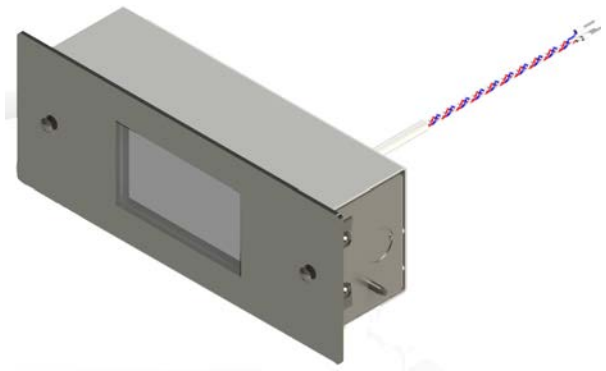
Traditional
Car Riding Lantern Assembly
556BY1: Discrete
556BY2: LON
556BY9: CAN & ICON32



Vandal Resistant
Car Riding Lantern Assembly
556BX1: Discrete
556BX2: LON
556BX3: CAN & ICON32



Signa4
Car Riding Lantern Assembly
556EB1: Discrete & LON
556EB3: CAN & ICON32



Destination Dispatch
Car Target Indicator Assembly
200CTJ001

Fire Service Assemblies



**Traditional & Signa4
Fire Service Panel
Assembly \geq A17.1, 2004
176CL13**



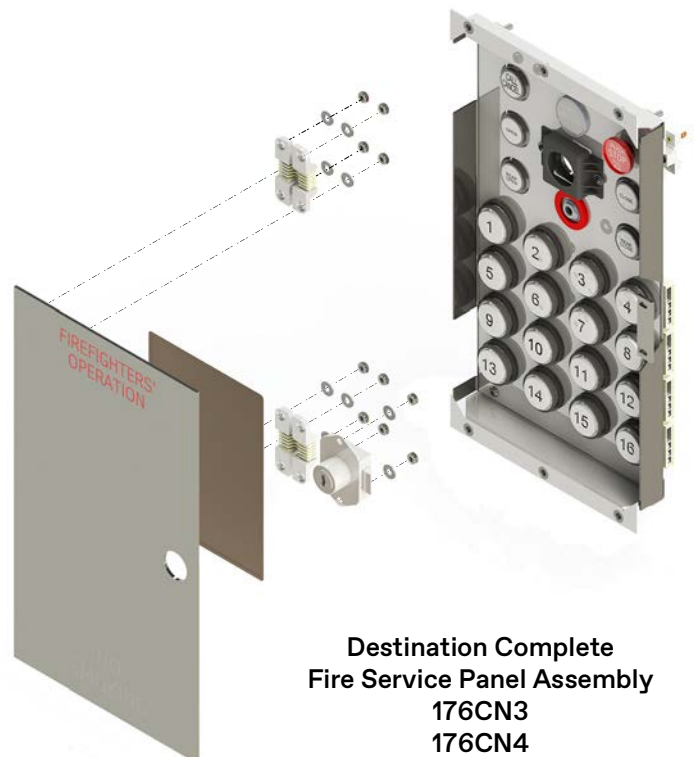
**Signa4
Fire Service Panel
Assembly \leq A17.1, 2000
176CF2**



**Traditional
Fire Service Box Assembly
172EY001**



**Fire Service Panel Assembly
176CN1
176CN2**



**Destination Complete
Fire Service Panel Assembly
176CN3
176CN4**

Fire Service Assemblies

(continued)



Fire Service Sign Kit
ANSI A17.1 1998 Code
200VG1



Fire Service Sign Kit
ANSI A17.1 2000 Code
200VG2



Fire Service Buzzer
177AC1



Locked Compartment Kits
200VP1 (shown)
200VP3
200VP4
200VP5 (Destination Complete)

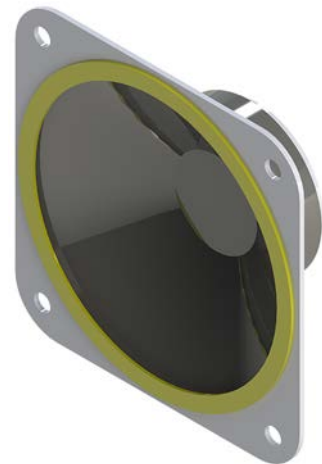


Fire Phone
Jack Bezel Assemblies
128BW3
128BW5

Audible Fixtures



**Audible Alarm
177AM1**



**Audible Speaker
(8 Ohm, 2 Watt)
177BH001**



**Voice Annunciator
177AY1 (Standard)
177AY2 (Destination Dispatch)**



**No Smoking Symbol
200VE1 (swing returns)
200VE3 (shown)**

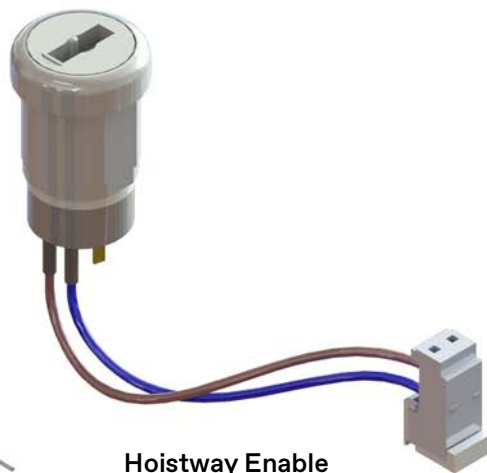


**Braille Car Sign
169CB_
Mounting Kit
200VL1 (not shown)**

Keyswitches



Independent Service, Car
171FF_
(171FF2 shown)



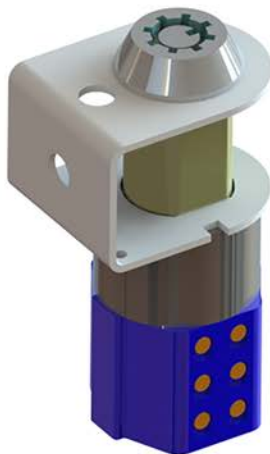
Hoistway Enable
171FE_
(171FE6 shown)



Keyswitch
171FH_
(171FH1 shown)



Fan or Light Combination
171FK_
(171FK1 shown)



Emergency Power
171GT_
(171GT1 shown)



Keyswitch
171GD_
(171GD2 shown)



RUN/STOP SWITCH ASSEMBLY



171HY001



171HX001

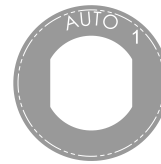
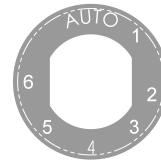
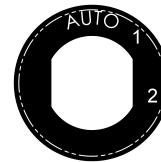
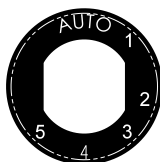
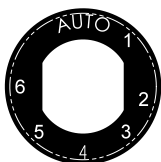
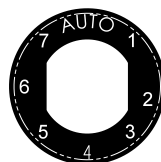
Keyswitch List

Print No.	Description
171LB001	Emergency Power, 1 Car, Key #204, (A17.1, B44, CH<= 2005), MA, NH, NJ, NY, WA, ME
171LC001	Emergency Power, 7 Cars, Key #204, (A17.1, B44, CH<= 2005), MA, NH, NJ, NY, WA, ME
171LC002	Emergency Power, 7 Cars, Key AZFS, Arizona
171LD001	Emergency Power, Multiple Cars, Key SC1000, S. Carolina
171LC003	Emergency Power, 7 Cars, Key WD01, Rhode Island
171LC004	Emergency Power, 3 Cars, Key #204, (A17.1, B44, CH<= 2005), MA, NH, NJ, NY, WA, ME
171LC010	Emergency Power, 4 Cars, Key #204, (A17.1, B44, CH<= 2005), MA, NH, NJ, NY, WA, ME
171LC005	Emergency Power, 3 Cars, Key AZFS, Arizona
171LC011	Emergency Power, 4 Cars, Key AZFS, Arizona
171LC006	Emergency Power, 3 Cars, Key WD01, Rhode Island
171LC012	Emergency Power, 4 Cars, Key WD01, Rhode Island
171LC007	Emergency Power, 2 Cars, Key #204, (A17.1, B44, CH<= 2005), MA, NH, NJ, NY, WA, ME
171LC008	Emergency Power, 2 Cars, Key AZFS, Arizona
171LC009	Emergency Power, 2 Cars, Key WD01, Rhode Island
171LH001	Emergency Power, 3 Position - Florida, Region 1, 2004 - ≥ 2014
171LH002	Emergency Power, 3 Position - Florida- Region 2 2004 - > 2014
171LH003	Emergency Power, 3 Position - Florida- Region 3 2004 - > 2014
171LH004	Emergency Power, 3 Position - Florida - Region 4 2004 - > 2014
171LH005	Emergency Power, 3 Position - Florida- Region 5 2004 - > 2014
171LH006	Emergency Power, 3 Position - Florida - Region 6 2004 - > 2014
171LH007	Emergency Power, 3 Position - Florida - Region 7 2004 - > 2014
171LH008	Emergency Power, 3 Position - Louisiana
171LH009	Emergency Power, 4 Position - Florida- Region 1 2004 - > 2014
171LH010	Emergency Power, 4 Position - Florida- Region 2 2004 - > 2014
171LH011	Emergency Power, 4 Position - Florida- Region 3 2004 - > 2014
171LH012	Emergency Power, 4 Position - Florida- Region 4 2004 - > 2014
171LH013	Emergency Power, 4 Position - Florida - Region 5 2004 - > 2014
171LH014	Emergency Power, 4 Position - Florida - Region 6 2004 - > 2014
171LH015	Emergency Power, 4 Position - Florida- Region 7 2004 - > 2014
171LH016	Emergency Power, 4 Position - Louisiana
171LH017	Emergency Power, 5 Position - Florida, Region 1, 2004 - ≥ 2014
171LH018	Emergency Power, 5 Position - Florida- Region 2 2004 - > 2014
171LH019	Emergency Power, 5 Position - Florida- Region 3 2004 - > 2014
171LH020	Emergency Power, 5 Position - Florida- Region 4 2004 - > 2014
171LH021	Emergency Power, 5 Position - Florida- Region 5 2004 - > 2014
171LH022	Emergency Power, 5 Position - Florida- Region 6 2004 - > 2014

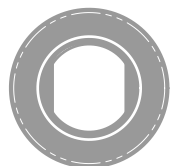
Print No. (cont.)	Description
171LH023	Emergency Power, 5 Position - Florida - Region 7 2004 - > 2014
171LH024	Emergency Power, 5 Position - Louisiana
171LH025	Emergency Power, 6 Position - Florida - Region 1 2004 - > 2014
171LH026	Emergency Power, 6 Position - Florida- Region 2 2004 - > 2014
171LH027	Emergency Power, 6 Position - Florida - Region 3 2004 - > 2014
171LH028	Emergency Power, 6 Position - Florida- Region 4 2004 - > 2014
171LH029	Emergency Power, 6 Position - Florida- Region 5 2004 - > 2014
171LH030	Emergency Power, 6 Position - Florida - Region 6 2004 - > 2014
171LH031	Emergency Power, 6 Position - Florida - Region 7 2004 - > 2014
171LH032	Emergency Power, 6 Position - Louisiana
171LH033	Emergency Power, 7 Position - Florida- Region 1 2004 - > 2014
171LH034	Emergency Power, 7 Position - Florida- Region 2 2004 - > 2014
171LH035	Emergency Power, 7 Position - Florida- Region 3 2004 - > 2014
171LH036	Emergency Power, 7 Position - Florida- Region 4 2004 - > 2014
171LH037	Emergency Power, 7 Position - Florida - Region 5 2004 - > 2014
171LH038	Emergency Power, 7 Position - Florida - Region 6 2004 - > 2014
171LH039	Emergency Power, 7 Position - Florida - Region 7 2004 - > 2014
171LH040	Emergency Power, 7 Position - Louisiana
171LH041	Emergency Power, 8 Position - Florida, Region 1, 2004 - ≥ 2014
171LH042	Emergency Power, 8 Position - Florida - Region 2 2004 - > 2014
171LH043	Emergency Power, 8 Position - Florida - Region 3 2004 - > 2014
171LH044	Emergency Power, 8 Position - Florida - Region 4 2004 - > 2014
171LH045	Emergency Power, 8 Position - Florida - Region 5 2004 - > 2014
171LH046	Emergency Power, 8 Position - Florida - Region 6 2004 - > 2014
171LH047	Emergency Power, 8 Position - Florida - Region 7 2004 - > 2014
171LH048	Emergency Power, 8 Position - Louisiana
171GT1	Emergency Power - Key# FEO-KI, 4 Cars, (A17.1, B44, CH=> 2007)
171LJ001	Emergency Power - Key# FEO-KI, 7 Cars, (A17.1, B44, CH=> 2007)
171GT3	Emergency Power - Key# FEO-KI, 1 Car, (A17.1, B44, CH=> 2007)
171GT4	Emergency Power - Key# FEO-KI, 2 Cars, (A17.1, B44, CH => 2007)
171GT5	Emergency Power - Key# FEO-KI, 3 Cars, (A17.1, B44, CH => 2007)
171LJ002	Emergency Power - Key# FEO-KI, 5 Cars, (A17.1, B44, CH => 2007)
171LJ003	Emergency Power - Key# FEO-KI, 6 Cars, (A17.1, B44, CH => 2007)
171FJ3	Call Registration, Terminal or Intermediate
171FH2	Hall Lockout
171FH2	Lobby Park
171FH3	Lobby Return
171BE3	Medico-Medical Emergency

Print No. (cont.)	Description
171GN3	Medico-Medical Emergency
171EL3	Fire Service, South Carolina
171LF001	Fire Service, Massachusetts, New Jersey, Maine 2007
160703	Fire Service, New York City
171FL1	Fire Service, 3 Position, ANSI, WA
171FL3	Hall Fire Service, Alternate ANSI <= 2005
171FL4	Hall Fire Service, Arizona
171FL5	Hall Fire Service, Rhode Island
171FL6	Hall Fire Service, Chicago 2001
171LG001	Hall Fire Service, Florida, Region 1, 2004 - ≥ 2014
171LG002	Hall Fire Service, Florida, Region 2, 2004 - ≥ 2014
171LG003	Hall Fire Service, Florida, Region 3, 2004 - ≥ 2014
171LG004	Hall Fire Service, Florida, Region 4, 2004 - ≥ 2014
171LG005	Hall Fire Service, Florida, Region 5, 2004 - ≥ 2014
171LG006	Hall Fire Service, Florida, Region 6, 2004 - ≥ 2014
171LG007	Hall Fire Service, Florida, Region 7, 2004 - ≥ 2014
171LG008	Hall Fire Service, Louisiana
171GN1	Hall Fire Service, Ontario, Canada, A17.1 & New Hampshire 2007
171GN2	Hall Fire Service, Ontario, Canada, Alternate Floor, => 2007
171FM6	Hoistway Access
171FM7	Hoistway Access
171FH3	Code Blue
171FH2	Inconspicuous Riser

Keycore Bezels 128BV_

**128BV1****128BV2****128BV4****128BV5****128BV6****128BV7****128BV8****128BV9****128BV10****128BV11****128BV12****128BV13****128BV27****128BV28****128BV29****128BV30****128BV31****128BV32****128BV33****128BV34****128BV35**

Keycore Bezels 128BP_



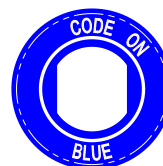
128BP1



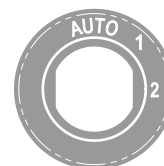
128BP3 Car/Hall



128BP4 Hall



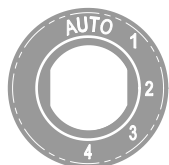
128BP5 Hall



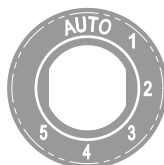
128BP6 Hall



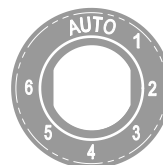
128BP7 Hall



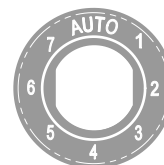
128BP8 Hall



128BP9 Hall



128BP10 Hall



128BP11 Hall



128BP12 Hall



128BP13 Hall



128BP14 Hall



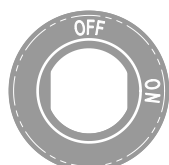
128BP15 Hall



128BP16 Hall



128BP17 Car/Hall



128BP18 Car/Hall



128BP19 Hall



128BP20 Hall



128BP21 Hall



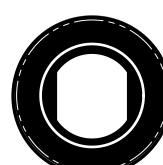
128BP22



128BP25 Car



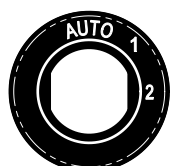
128BP26



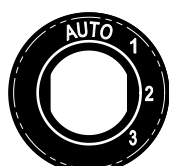
128BP31



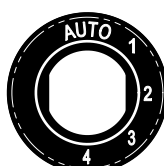
128BP34 Hall



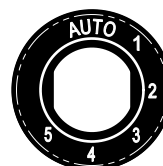
128BP36 Hall



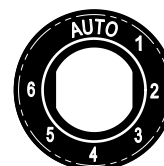
128BP37 Hall



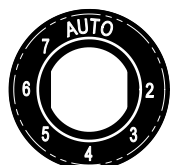
128BP38 Hall



128BP39 Hall



128BP40 Hall



128BP41 Hall



128BP42 Hall



128BP43 Hall



128BP45 Hall



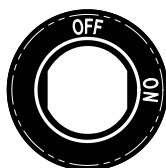
128BP46 Hall

Keycore Bezels 128BP

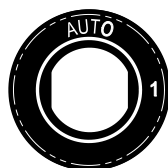
(continued)



128BP47



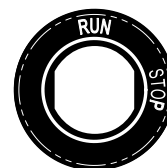
128BP48



128BP49



128BP50



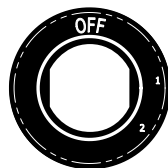
128BP55



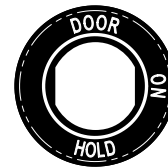
128BP56



128BP57 Car



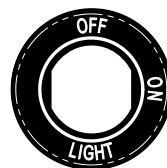
128BP58 Car



128BP59 Car



128BP60 Car



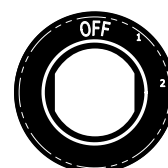
128BP61 Car



128BP62 Car/Hall



128BP63 Car/Hall



128BP64 Car



128BP65 Car



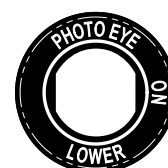
128BP66 Car



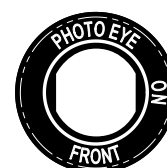
128BP68 Car



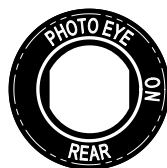
128BP70 Car



128BP71 Car



128BP72 Car



128BP73 Car



128BP74 Car/Hall



128BP75 Hall



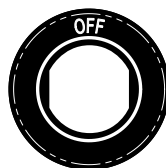
128BP76 Car



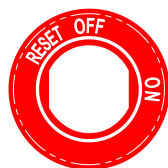
128BP77 Car



128BP78 Car



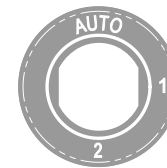
128BP79 Car



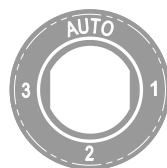
128BP80 Hall



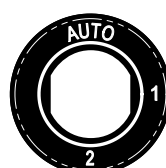
128BP81 Car



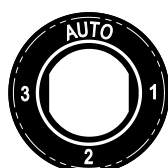
128BP82 Hall



128BP83 Hall



128BP84 Hall



128BP85 Hall



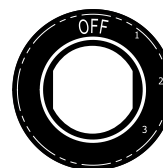
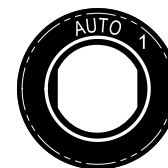
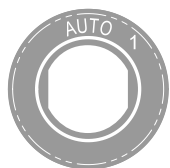
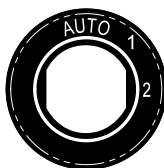
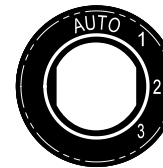
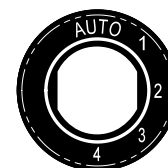
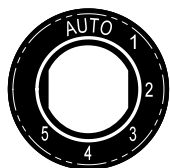
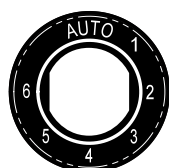
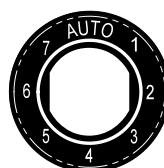
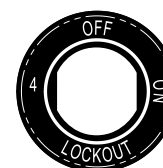
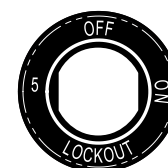
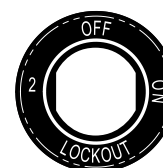
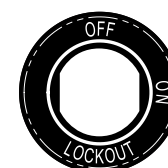
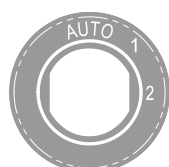
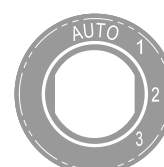
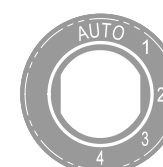
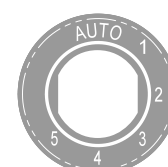
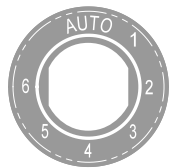
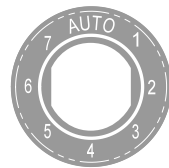
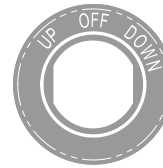
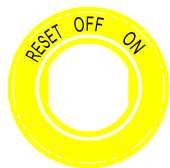
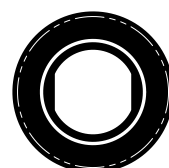
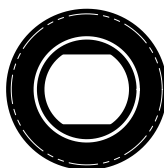
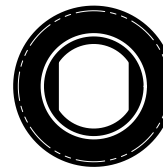
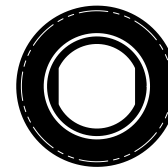
128BP86 Car



128BP87 Hall

Keycore Bezels 128BP

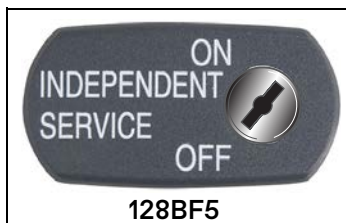
(continued)

**128BP88 Hall****128BP90 Car****128BP91****128BP92****128BP93****128BP94****128BP95****128BP96 Hall****128BP97 Hall****128BP98 Hall****128BP99 Hall****128BP100 Hall****128BP101 Hall****128BP102****128BP103****128BP104****128BP105****128BP106****128BP107****128BP108****128BP109 Hall****128BP110 Hall****128BP111 Hall****128BP112 Hall****128BP113 Hall****128BP114 Hall****128BP115 Hall****128BP116 Hall****128BP117 Hall****128BP118 Hall****128BP119****128BP120****128BP121****128BP122****128BP123**

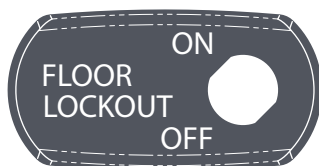
Keyswitch Bezels 128BF_



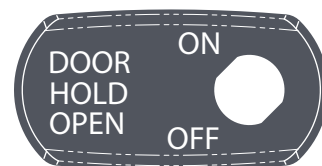
128BF1



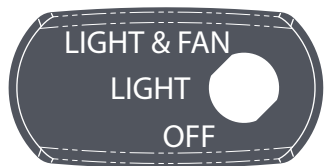
128BF5



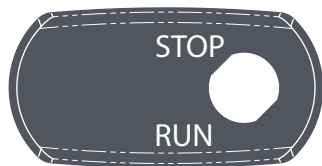
128BF9



128BF13



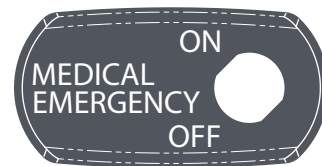
128BF2



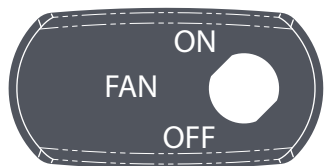
128BF6



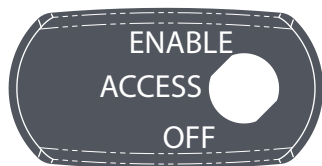
128BF10



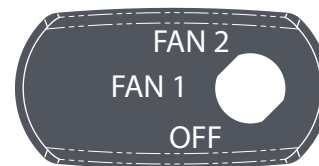
128BF14



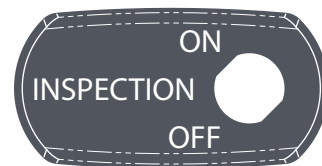
128BF3



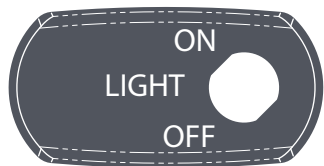
128BF7



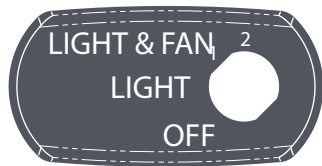
128BF11



128BF15



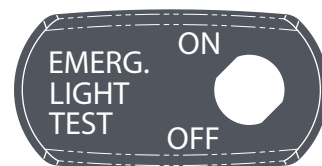
128BF4



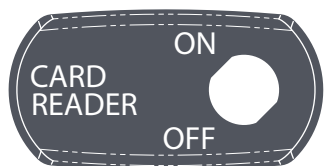
128BF8



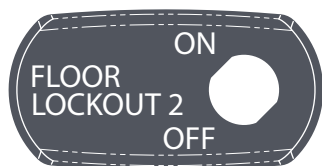
128BF12



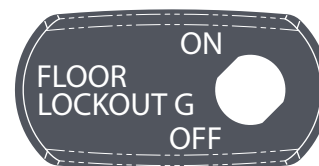
128BF16



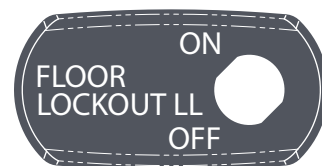
128BF17



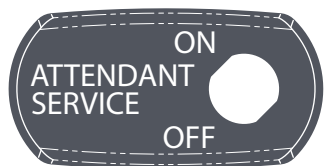
128BF20



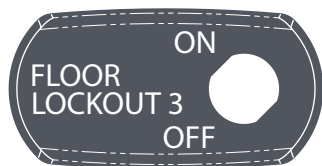
128BF23



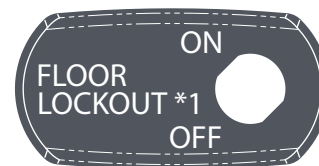
128BF26



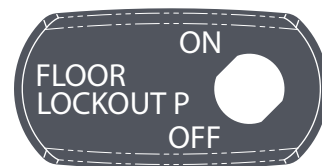
128BF18



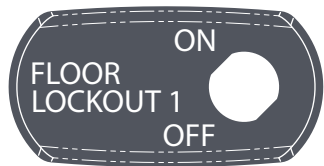
128BF21



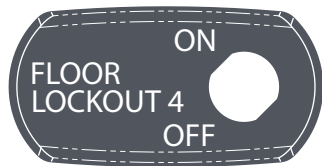
128BF24



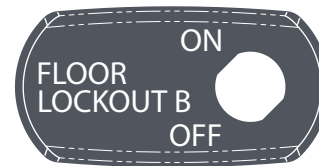
128BF27



128BF19



128BF22



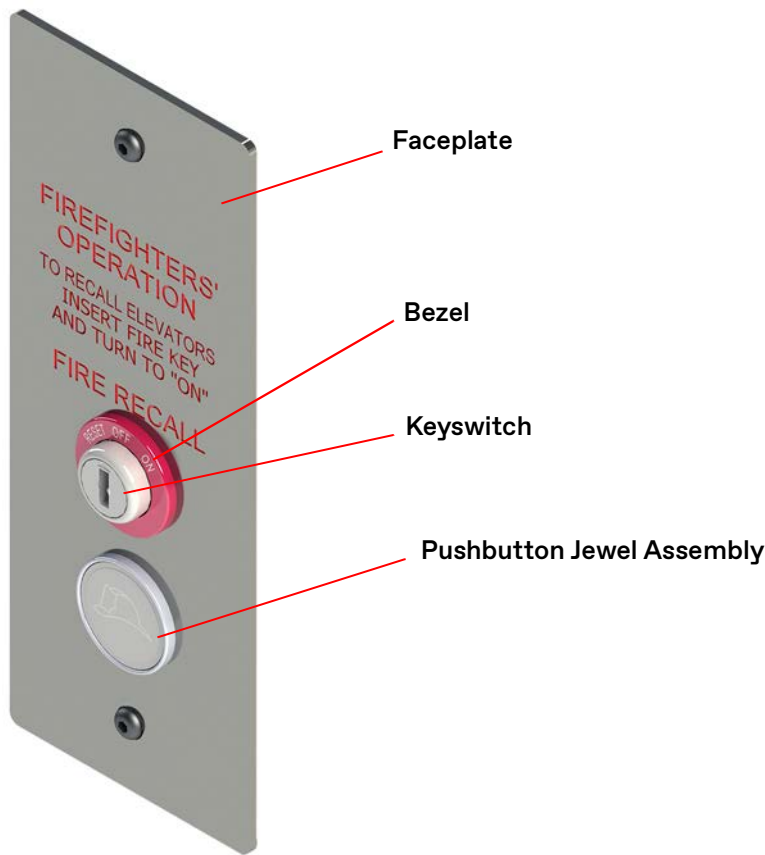
128BF25

HALL SIGNAL FIXTURES

HALL SIGNAL FIXTURES

Traditional or Vandal Hall Station Assembly

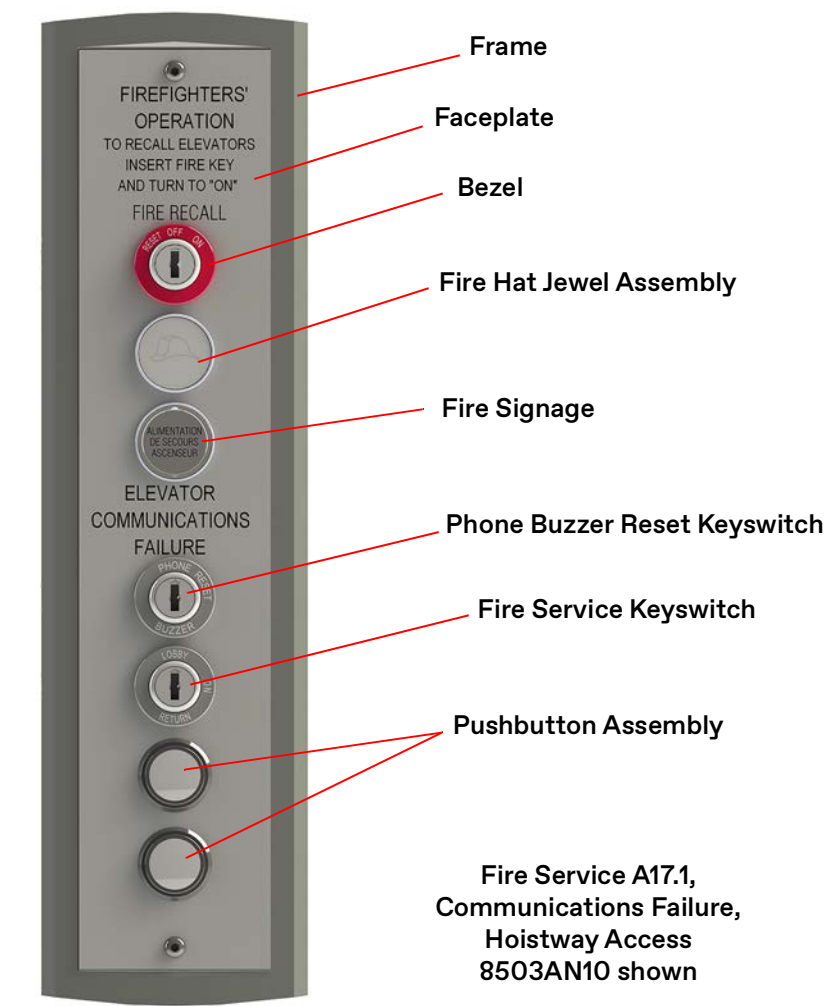
8503AF1 Overview



Print No.	Faceplate Description
141FX3 - 141FX7	2 Fasteners
141FY3 - 141FY7	4 Fasteners
141MR004, 141MR010	1 Device
141MR005, 141MR011	2 Devices
141MR006, 141MR012	3 Devices
141PA003 - 141PA007	2008, A17.1 Emergency Power
141PB003 - 141PB007	2009, A17.1 Communication Failure
141TM001	Communication Failure, Vendor, Destination Dispatch
141TN001	Fire Service, Vendor, Destination Dispatch
141TP001	Keyswitch, Vendor, Destination Dispatch
141TR001	Fire Service with Keyswitch, Vendor, Destination Dispatch
141WE001	Fire Recall Station, Per Car, OEO
141WF001 - 141WF004	Weldment, Per Car Fire Service, OEO
141WH001	Weldment, Per Car Fire Service, OEO, Vendor

Signa4 Hall Station Assembly

8503AN_ Overview



Assembly No.	Description
8503AN1	Hoistway Access, Fire Service, Emergency Power
8503AN2	Fire Service, Emergency Power, Hoistway Access
8503AN3	Fire Service, Stand Alone
8503AN4	Fire Service, A17.1 and MA, Hoistway Access
8503AN5	Fire Service, Emergency Power, Hoistway Access
8503AN6	Emergency Power
8503AN7	Communications Failure
8503AN8	Fire Service A17.1, Applied Signage, Communications Failure
8503AN9	Fire Service A17.1, Engraved Signage, Communications Failure
8503AN10	Fire Service A17.1, Communications Failure, Hoistway Access
8503AN11	Fire Service A17.1, Communications Failure

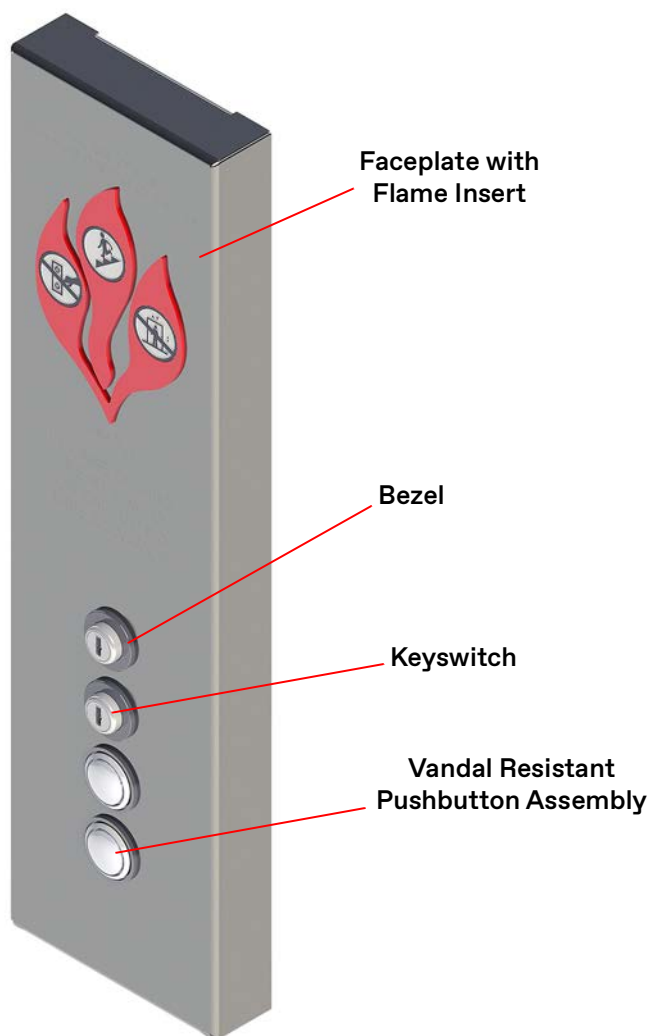
Configuration Options

- CAN, Discrete or Lon
- Terminal or Intermediate
- Terminal with Devices
- Intermediate with Devices

Surface Mount Hall Station Assembly

176CY_ Overview

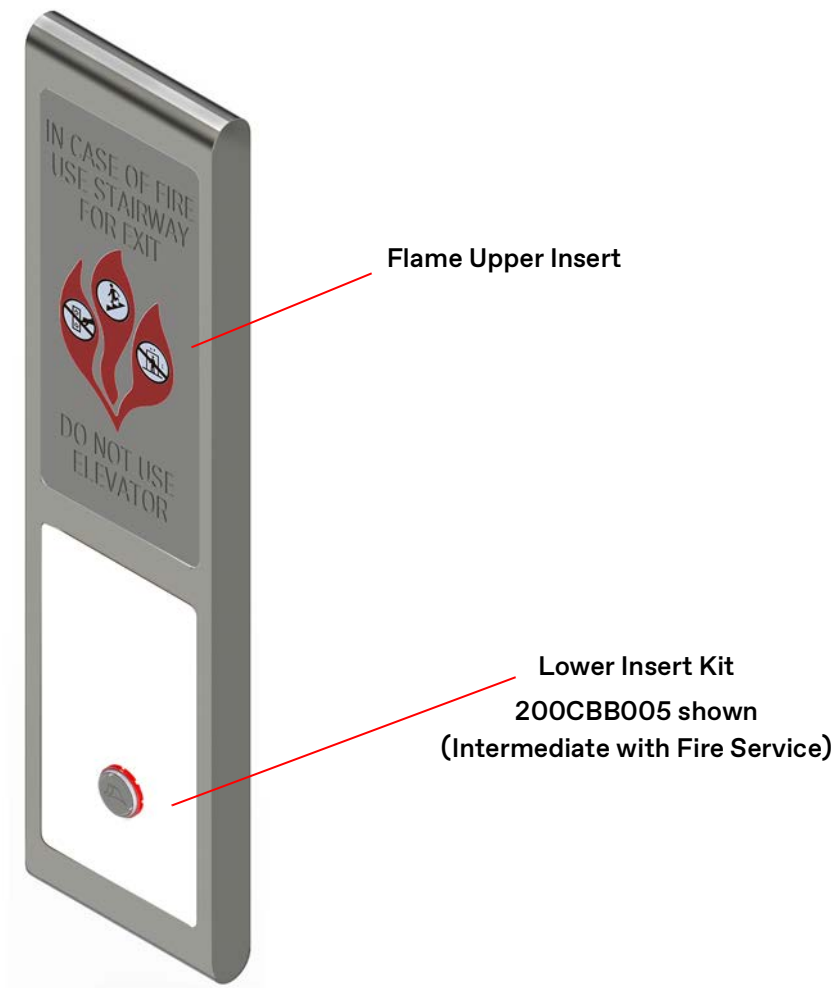
176CY001 (Discrete), 176CY002 (LON), 176CY003 (CAN)



Print No.	Faceplate Description
141MW_	30° Faceplate
141MV_	90° Faceplate
141PE_	30° Faceplate, => 2008 A17.1 Code
141PG_	90° Faceplate, => 2008 A17.1 Code
141PD_	30° Faceplate, => 2009, A17.1 Communication Failure
141PF_	90° Faceplate, => 2009, A17.1 Communication Failure
141WT_	30° Faceplate Assembly, Hoistway Access
141WV_	90° Faceplate Assembly, Hoistway Access

Fusion Hall Station Assembly

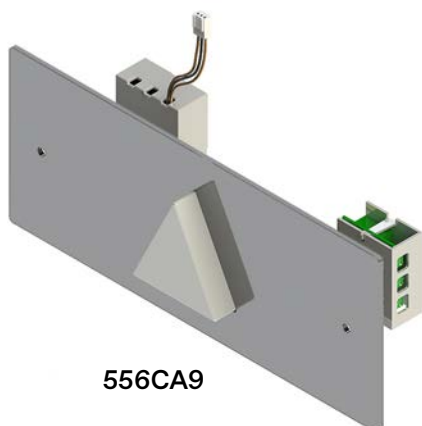
176DL_ Overview



Print No.	Faceplate Description
141PT001 - 141PT009	Flame Upper Insert
200CBB001 - 200CBB007	Lower Insert Kit
200CBA001 - 200CBA008	Lower Insert Kit, Communication Failure, Fire Service
200CBB008 - 200CBB010	Lower Insert Kit, Terminal with Hoistway Access
200CRY001 - 200CRY004	Lower Insert Kit, Terminal with Hoistway Access, Comm. Failure, Fire Service

Hall Lantern Assemblies

TRADITIONAL

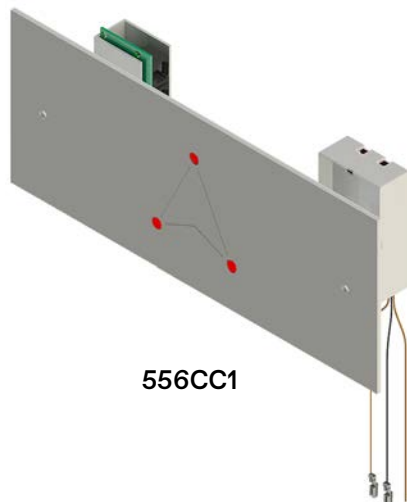


556CA9

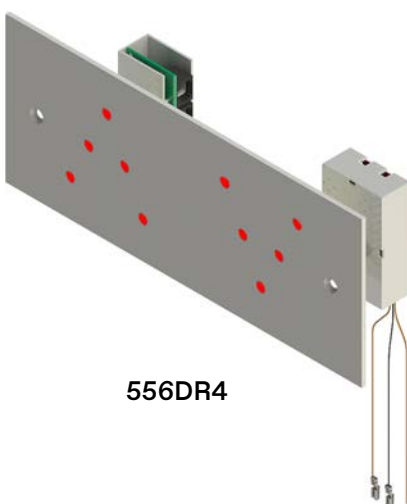


556CB9

VANDAL RESISTANT



556CC1



556DR4

SIGNA4



556DM9



556DM5

FUSION



556EW001

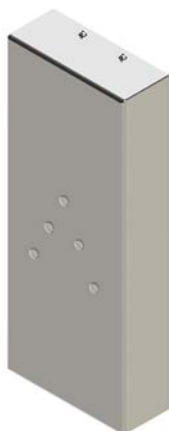


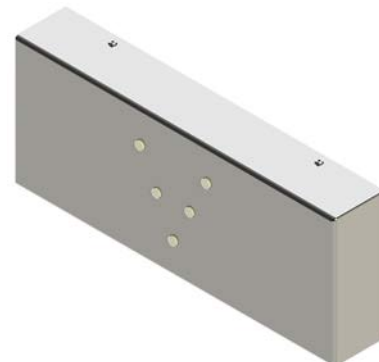
556EX003

Hall Lantern Assemblies
 (continued)

90° SURFACE MOUNT

 556FP_
 556FP003 shown

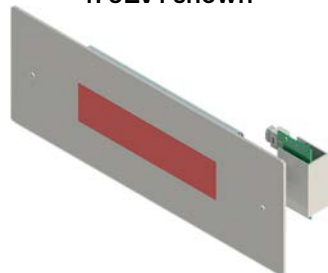
 556FN_
 556FN001 shown

 556FJ_
 556FJ002 shown

 556FM_
 556FM003 shown


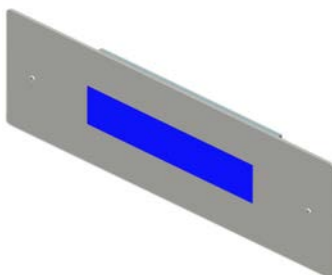
TRADITIONAL	Triangular			Round		
	LON	Discrete	CAN	LON	Discrete	CAN
Terminal Up/Down	556CA7	556CA8	556CA9	556CB7	556CB8	556CB9
Intermediate	556CA10	556CA11	556CA12	556CB10	556CB11	556CB12
VANDAL RESISTANT	3 Light			5 Light		
	LON	Discrete	CAN	LON	Discrete	CAN
Terminal Up/Down	556CC1	556CC2	556CC5	556DR1	556DR2	556DR3
Intermediate	556CC3	556CC4	556CC6	556DR4	556DR5	556DR6
90° SURFACE MOUNT	Triangular			Vandal Resistant		
Horizontal		Discrete	CAN		Discrete	CAN
Terminal Up		556FJ001	556FJ001		556FM001	556FM001
Intermediate		556FJ002	556FJ002		556FM002	556FM002
Terminal Down		556FJ003	556FJ003		556FM003	556FM003
Vertical		Discrete	CAN		Discrete	CAN
Terminal Up		556FP001	556FP001		556FN001	556FN001
Intermediate		556FP002	556FP002		556FN002	556FN002
Terminal Down		556FP003	556FP003		556FN003	556FN003
FUSION	Triangular					
Horizontal			CAN			
Terminal Up			556EW001			
Intermediate			556EW002			
Terminal Down			556EW003			
Vertical			CAN			
Terminal Up			556EX001			
Intermediate			556EX002			
Terminal Down			556EX003			
SIGNA4	Arrow	Round				
Terminal Up/Down	556DM9	556DM5				
Intermediate Up/Down	556DM10	556DM6				

Position Indicator (PI) Assemblies

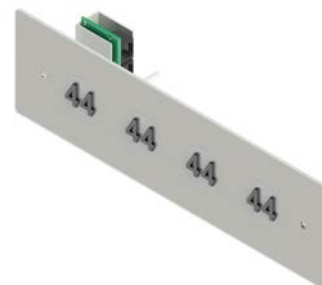
Traditional
178LV_
178LV1 shown



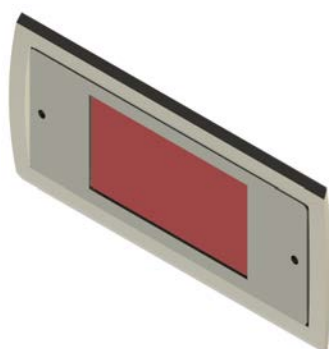
Traditional
178LX_
178LX1 shown



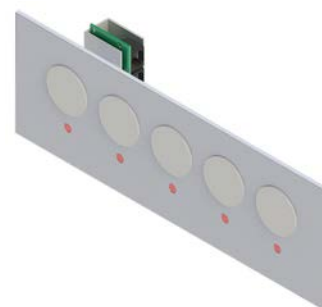
Traditional
178LT_
178LT1 shown



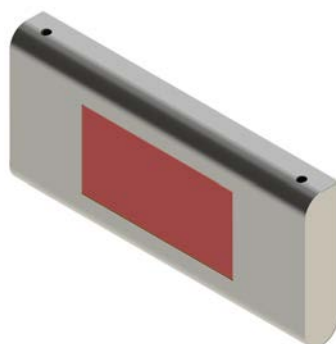
Signa4
178ME_
178ME1 shown



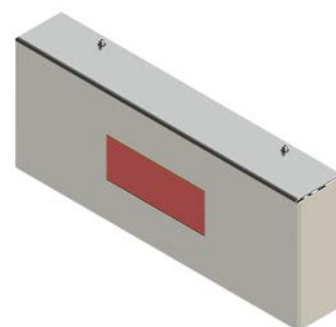
Vandal Resistant
178LY_
178LY1 shown



Fusion
178MJ_
178MJ1 shown



90° Surface Mount
178MN_, 1"
178MT_, 2"
178MN1 shown



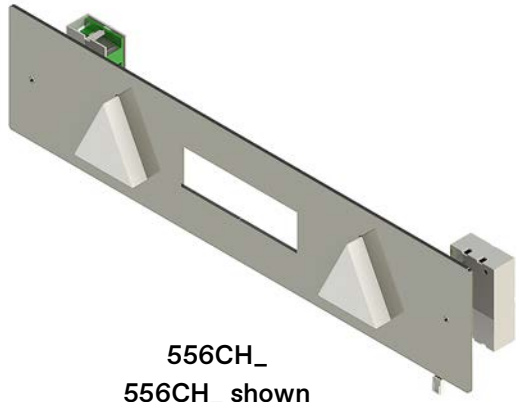
Discrete PI	LON	Discrete	CAN
TRADITIONAL	178LV1	178LV2	178LV2
SIGNA4	178ME1	178ME1	178ME1
CE PI	LON	Discrete	CAN
TRADITIONAL	178LX1	178LX2	178LX3
SIGNA4	—	—	—
FUSION	—	—	178MJ001
90° SURFACE MOUNT - 1"	—	178MN001	178MN001
90° SURFACE MOUNT - 2"	—	178MT001	178MT001

Light Up PI	LON	Discrete	CAN
TRADITIONAL	178LT1	178LT2	178LT2
SIGNA4	—	—	—
Vandal PI	LON	Discrete	CAN
Terminal Up/Down	178LY1	178LY2	178LY2
Digital PI	LON	Discrete	CAN
TRADITIONAL	178LX1	178LX2	178LX3
SIGNA4	178ME4	—	178ME2

Combination Hall Lantern & PI Assemblies

See the Complete List of Assembly Numbers on page H-15.

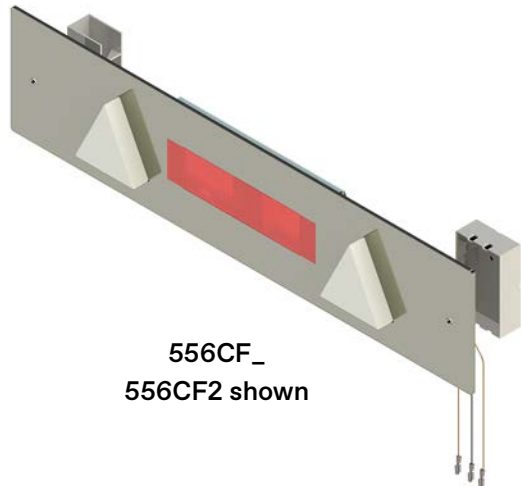
Traditional Fixtures



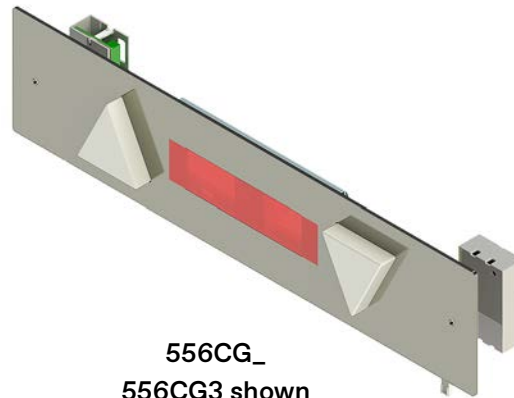
556CH_
556CH_ shown



556CJ_
556CJ1 shown



556CF_
556CF2 shown



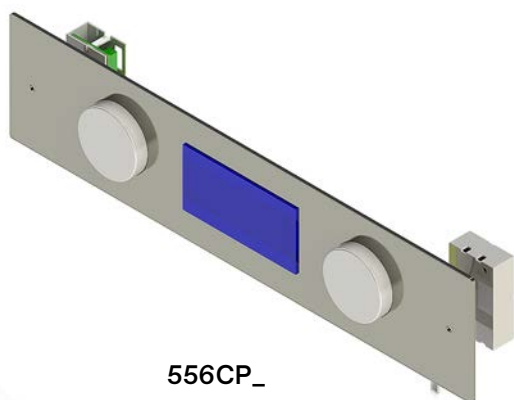
556CG_
556CG3 shown



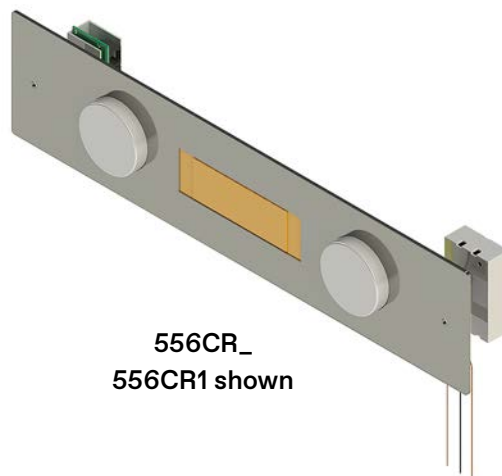
556CK_
556CK1 shown



556CL_
556CL1 shown

Traditional Fixtures
(continued)

556CP_
556CP3 shown



556CR_
556CR1 shown



556CM_
556CM2 shown



556CN_
556CN1 shown

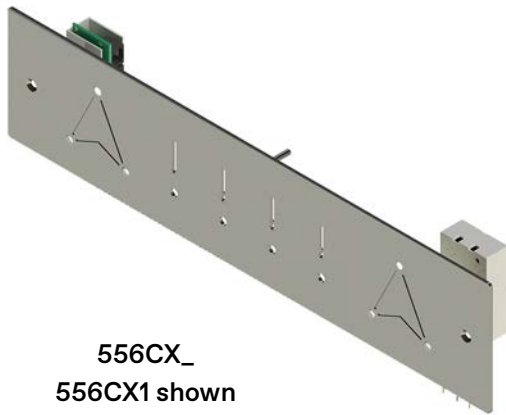


556CT_
556CT_ shown



556CV_
556CV1 shown

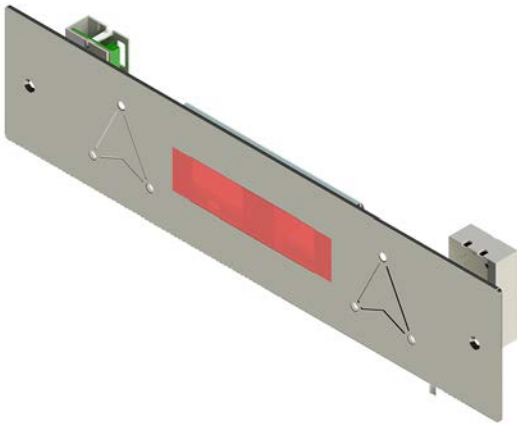
Vandal Resistant Fixtures



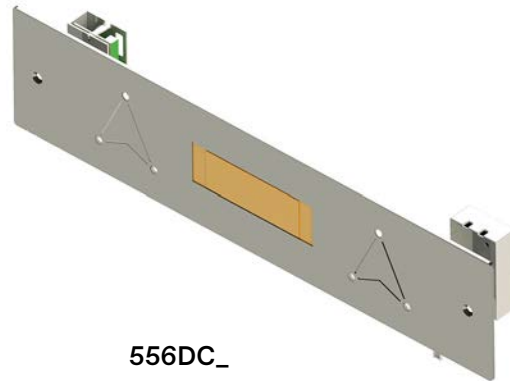
556CX_
556CX1 shown



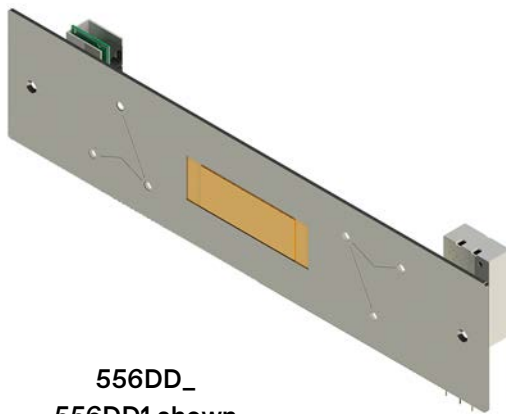
556CY_
556CY1 shown



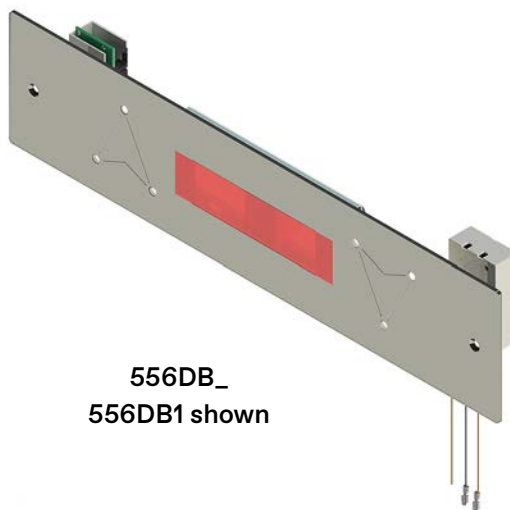
556DA_
556DA3 shown



556DC_
556DC3 shown



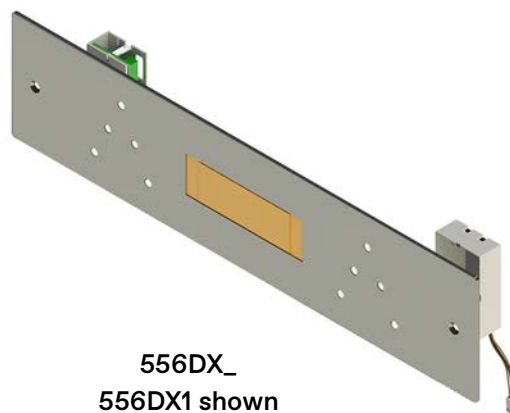
556DD_
556DD1 shown



556DB_
556DB1 shown

Vandal Resistant Fixtures
(continued)

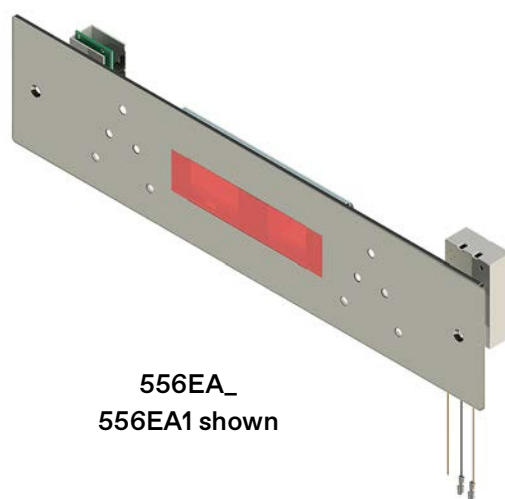
**556DV_
556DV1 shown**



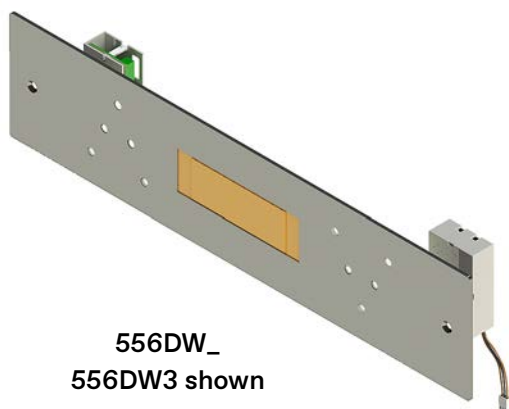
**556DX_
556DX1 shown**



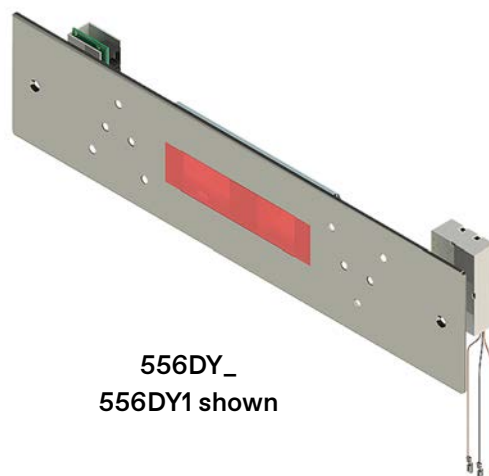
**556DT_
556DT1 shown**



**556EA_
556EA1 shown**

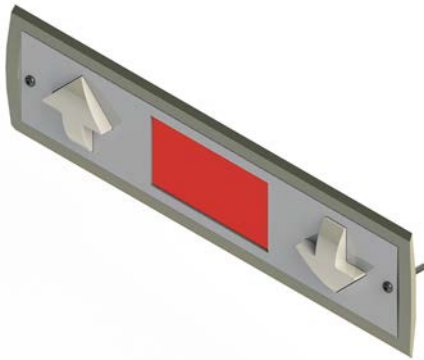


**556DW_
556DW3 shown**

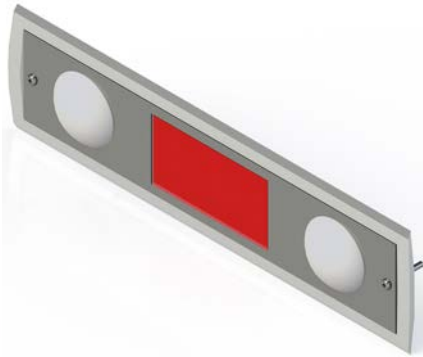


**556DY_
556DY1 shown**

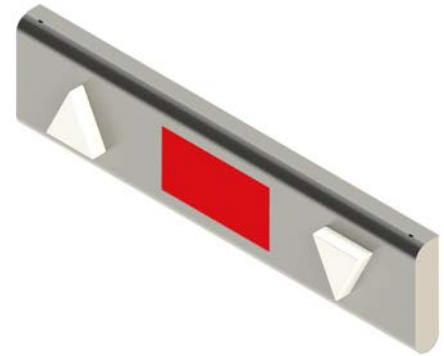
Signa4 Fixtures



556DN_
556DN3 shown

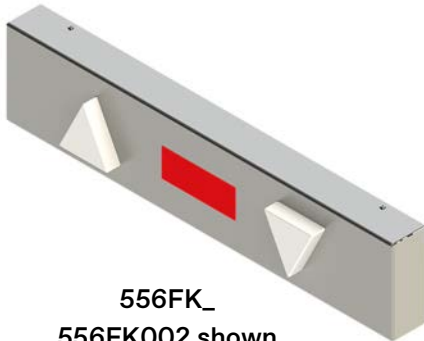


556DN_
556DN13 shown

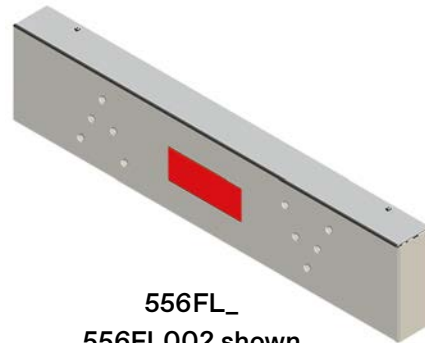


556EV_
556EV002 shown

90° Surface Mount Fixtures



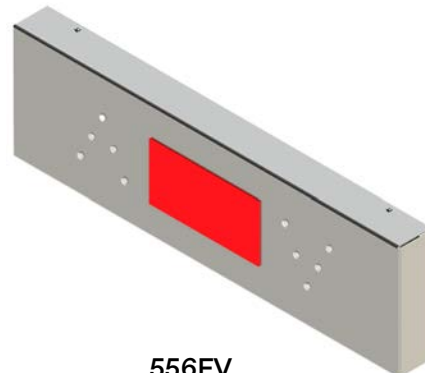
556FK_
556FK002 shown



556FL_
556FL002 shown



556FT_
556FT002 shown



556FV_
556FV002 shown

Assembly Numbers

Traditional	Dot Matrix CE Segmented			Discrete Position Indicator			Light Up Position Indicator		
Triangular	LON	Discrete	CAN	LON	Discrete	CAN	LON	Discrete	CAN
Term. Up/Dn	556CH1	556CH2	556CH3	556CF1	556CF2	556CF3	556CK1	556CK2	556CK3
Intermediate	556CJ1	556CJ2	556CJ3	556CG1	556CG2	556CG3	556CL1	556CL2	556CL3

Round	LON	Discrete	CAN	LON	Discrete	CAN	LON	Discrete	CAN
Term. Up/Dn	556CP1	556CP2	556CP3	556CM1	556CM2	556CM3	556CT1	556CT2	556CT3
Intermediate	556CR1	556CR2	556CR3	556CN1	556CN2	556CN3	556CV1	556CV2	556CV3

Vandal Resistant	Vandal Position Indicator			Dot Matrix CE Segmented			Discrete Position Indicator		
3 Light	LON	Discrete	CAN	LON	Discrete	CAN	LON	Discrete	CAN
Term. Up/Dn	556CX1	556CX2	556CX3	556DC1	556DC2	556DC3	556DA1	556DA2	556DA3
Intermediate	556CY1	556CY2	556CY3	556DD1	556DD2	556DD3	556DB1	556DB2	556DB3
5 Light	LON	Discrete	CAN	LON	Discrete	CAN	LON	Discrete	CAN
Term. Up/Dn	556DV1	556DV2	556DV3	556DX1	556DX2	556DX3	556EA1	556EA2	556EA3
Intermediate	556DT1	556DT2	556DT3	556DW1	556DW2	556DW3	556DY1	556DY2	556DY3

Signa4	Arrow			Round		
Combination	LON	Discrete	CAN	LON	Discrete	CAN
Term. Up/Dn	556DN16	556DN1	556DN2	556DN15	556DN13	556DN14
Inter. Up/Dn	556DN17	556DN3	556DN4			

90° Surface Mount	Triangular		Vandal Resistant	
Combination	1"	2"	1"	2"
Term. Up	556FK001	556FT001	556FL001	556FV001
Intermediate	556FK002	556FT002	556FL002	556FV002
Term. Down	556FK003	556FT003	556FL003	556FV003

Fusion	CAN
Triangular	
Term. Up	556EV001
Intermediate	556EV002
Term. Down	556EV003

**This page
intentionally
left blank.**

PUSHBUTTON ASSEMBLIES

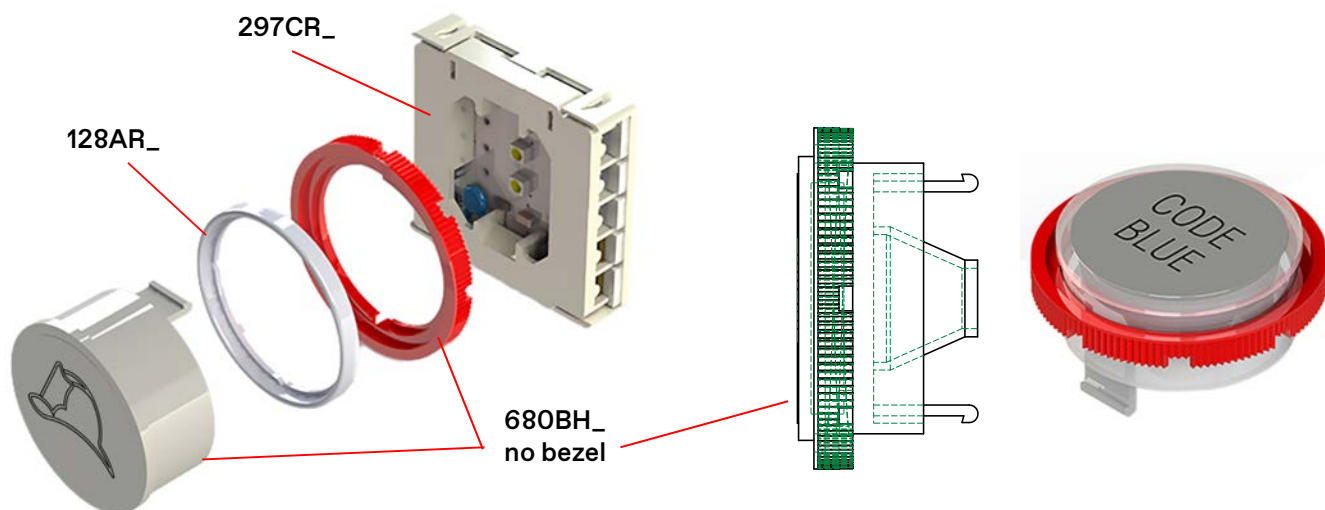
PUSHBUTTON ASSEMBLIES

Jewel Pushbutton Assemblies

See also: Jewel Assemblies List on page P-5.

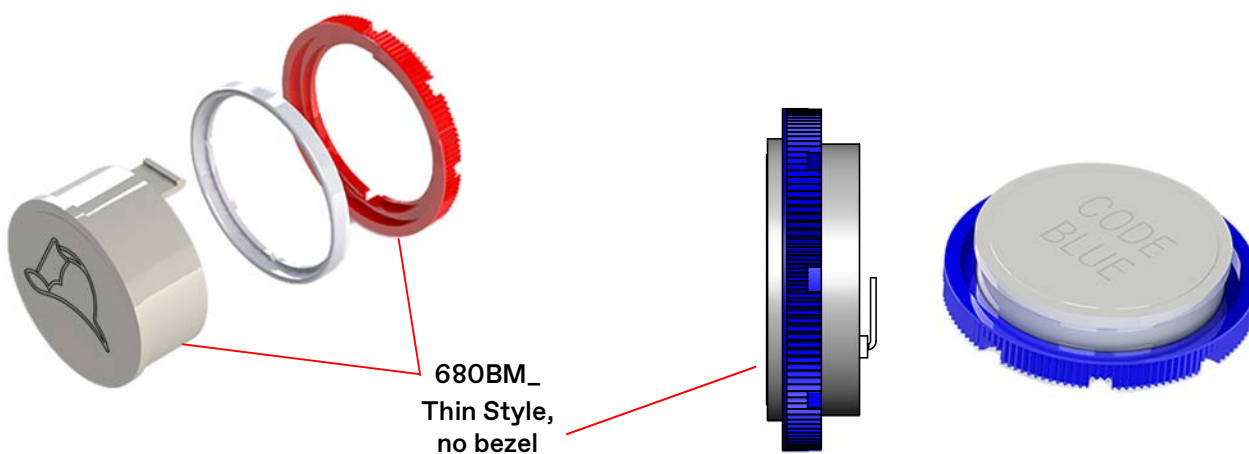
680BJ1

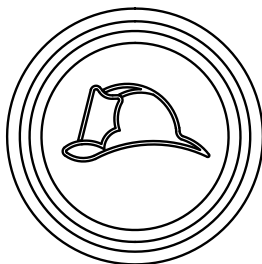
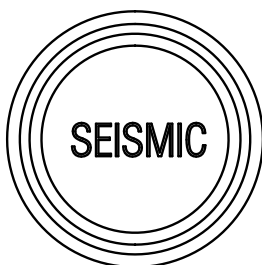
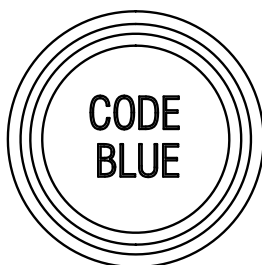
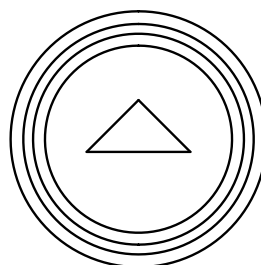
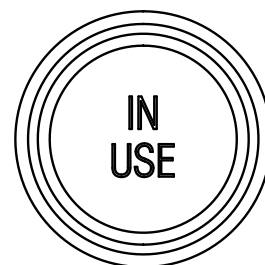
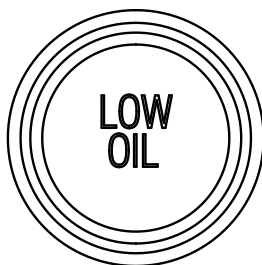
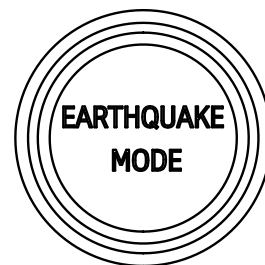
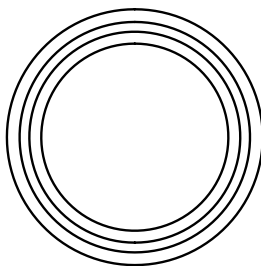
Controller by others,
Multi volt base



680BJ2

TKE Controllers,
4 pin connector

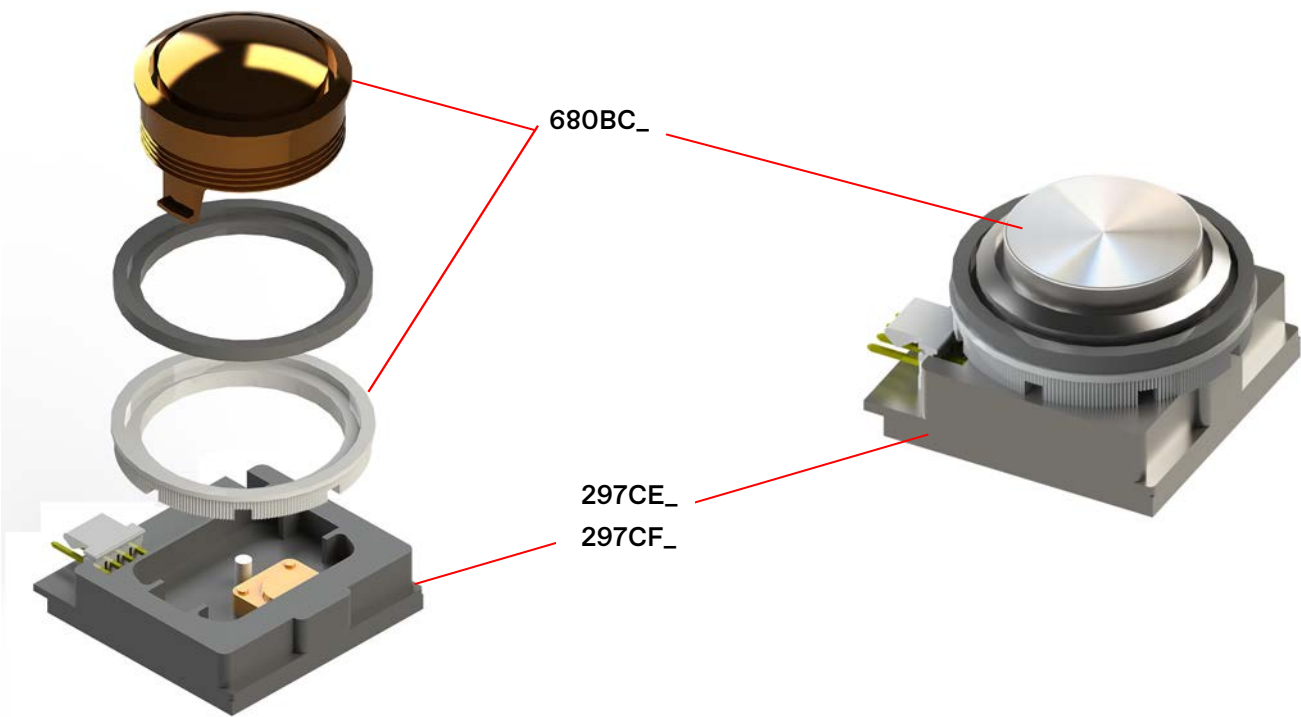


680BH_, 680BM_
(continued)680BM001
680BH1680BM002
680BH2680BM003
680BH3680BM004
680BH4680BM005
680BH5680BM006
680BH6680BM007
680BH7680BM008
680BH8680BM010
680BH10680BM011
680BH11680BM012
680BH12680BM013
680BH13680BH9
Blank

Jewel Assemblies List

Style	Print No.		Jewel Description	Bezel Color	Illumination Color
	680BJ1	680BJ2			
Traditional	680BH1	680BM001	Fire Hat	Red	Red
	680BH1	680BM001	Fire Hat	Black	Red
	680BH1	680BM001	Fire Hat	Gray	Red
	680BH2	680BM002	Emergency Power	Black	Blue
	680BH3	680BM003	Emergency Power, French	Black	Blue
	680BH4	680BM004	Medical Emergency	Blue	Blue
	680BH5	680BM005	Seismic	Black	Red
	680BH6	680BM006	Code Blue	Black	Blue
	680BH7	680BM007	Direction Arrow	Black	Req.
	680BH8	680BM008	In Use	Black	White
	680BH9	—	Blank	As Requested	
	680BH10	680BM010	Overload	Black	Red
	680BH11	680BM011	Low Oil	Black	Red
	680BH12	680BM012	Communication Failure	Black	White
	680BH13	680BM013	Earthquake Mode	Black	Red
Signal4	680BH1	680BM001	Fire Hat	Red	Red
	680BH1	680BM001	Fire Hat	Gray	Red
	680BH2	680BM002	Emergency Power	Gray	Blue
	680BH3	680BM003	Emergency Power, French	Gray	Blue
	680BH4	680BM004	Medical Emergency	Blue	Blue
	680BH5	680BM005	Seismic	Gray	Red
	680BH6	680BM006	Code Blue	Gray	Blue
	680BH7	680BM007	Direction Arrow	Gray	Requested
	680BH8	680BM008	In Use	Gray	White
	680BH9	—	Blank	As Requested	
	680BH10	680BM010	Overload	Gray	Red
	680BH11	680BM011	Low Oil	Gray	Red
	680BH12	680BM012	Communication Failure	Gray	White
	680BH13	680BM013	Earthquake Mode	Gray	Red
Traditional Signal4	128AR6	128AR6	Push Button Bezel	Red	—
	128AR2	128AR2	Push Button Bezel	Blue	—
	128AR7	128AR7	Push Button Bezel	Black	—
	128AR1	128AR1	Push Button Bezel	Gray	—
	297CR1	—	2 LED Screw Conn Contact	—	Blue
	297CR2	—	2 LED Screw Conn Contact	—	White
	297CR3	—	2 LED Screw Conn Contact	—	Red
	128AR6	128AR6	Push Button Bezel	Red	—
	128AR2	128AR2	Push Button Bezel	Blue	—
	128AR7	128AR7	Push Button Bezel	Black	—
	128AR1	128AR1	Push Button Bezel	Gray	—
	297CR1	—	2 LED Screw Conn Contact	—	Blue
	297CR2	—	2 LED Screw Conn Contact	—	White
	297CR3	—	2 LED Screw Conn Contact	—	Red

Vandal Resistant Pushbutton (680AX8)

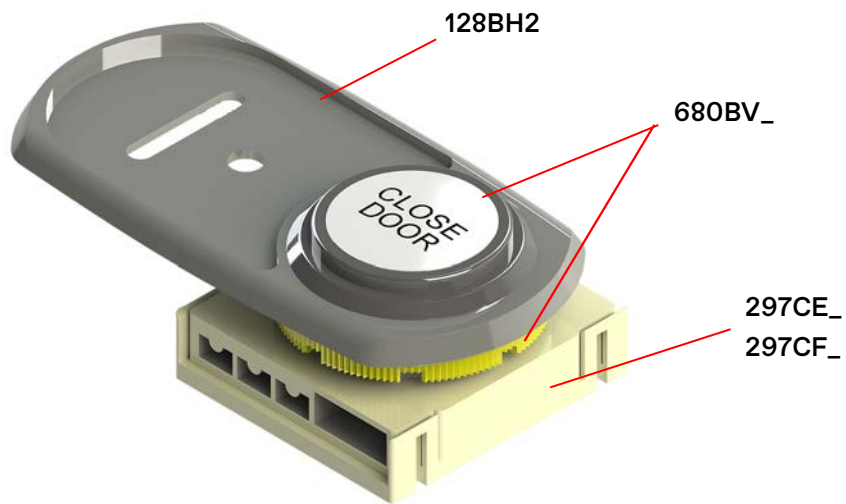


	Print No.	Description	LED Color
Contact	297CE1	4 pin Connector, 1 LED, 24V	Blue
	297CE2	4 pin Connector, 1 LED, 24V	White
	297CE4	4 pin Connector, 0 LED, 24V	—
	297CE5	4 pin Connector, 1 LED, 12V	Red
	297CE7	4 pin Connector, 1 LED, 24V	Red
	297CE8	4 pin Connector, 1 LED, 24V	Green
	297CF1	Screw Connector, 1 LED	Blue
	297CF2	Screw Connector, 1 LED	White
	297CF3	Screw Connector, 1 LED	Red
	297CF5	Screw Connector, 0 LED, 6-120 AC/DC	—
	297CF8	Screw Connector, 1 LED	Green
Assembly	680BC7	Stainless Push Button	
	680BC2	Stainless Push Button	
	680BC8	Stainless Push Button	
	680BC9	Bronze Push Button	
	680BC10	Bronze Push Button	
	680BC6	Bronze Push Button	

Default Illumination Color

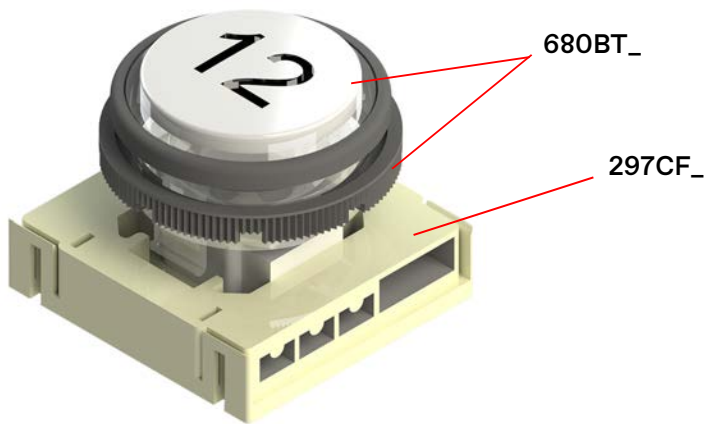
- Traditional = White
- Vandal = Red
- Signa4 = Blue

Traditional Pushbutton (680BX001)



	Print No.	Description	LED Color
Contact	297CE1	4 pin Connector, 1 LED	Blue
	297CE2	4 pin Connector, 1 LED	White
	297CE4	4 pin Connector, 0 LED	—
	297CE5	4 pin Connector, 1 LED, 12V	Red
	297CE7	4 pin Connector, 1 LED, 24V	Red
	297CE8	4 pin Connector	Green
	297CF1	Screw Connection, 1 LED	Blue
	297CF2	Screw Connection, 1 LED	White
	297CF3	Screw Connection, 1 LED	Red
	297CF5	Screw Connection, 0 LED	—
	297CF8	Screw Connection, 1 LED	Green
	128BH2	Bezel for Button	Signa4 Only
Assembly	680BV016	Blank	
	680BV003	Open Door	
	680BV004	Close Door	
	680BV005	Close Door Front	
	680BV006	Close Door Rear	
	680BV007	Open Door Front	
	680BV008	Open Door Rear	
	680BV009	Hold Door	
	680BV010	Call Cancel	
	680BV011	Emergency Test Light	
	680BV017	Arrow	
	680BW001	Alarm Car	

Destination Complete (680BX002)



	Print No.	Description	LED Color
Contact	297CF1	Screw Connection, 1 LED	Blue
	297CF2	Screw Connection, 1 LED	White
	297CF3	Screw Connection, 1 LED	Red
	297CF5	Screw Connection, 0 LED	—
	297CF8	Screw Connection, 1 LED	Green
Pushbutton	680BT006	Floor Markings, Destination Dispatch, 6	
	680BT007	Floor Markings, Destination Dispatch, 7	
	680BT008	Floor Markings, Destination Dispatch, 8	
	680BT009	Floor Markings, Destination Dispatch, 9	
	680BT010	Floor Markings, Destination Dispatch, 10	
	680BT011	Floor Markings, Destination Dispatch, 11	
	680BT012	Floor Markings, Destination Dispatch, 12	
	680BT013	Floor Markings, Destination Dispatch, 13	
	680BT014	Floor Markings, Destination Dispatch, 14	
	680BT015	Floor Markings, Destination Dispatch, 15	
	By request	Floor Markings, Destination Dispatch, 16 - 10R	



VERTICAL EXPRESS

9280 Crestwyn Hills Memphis, TN 38125
Tel: (866) 448-3789 (toll free) Fax: (901) 877-8099
www.verticalxpress.com

All illustrations and specifications are based on information in effect at time of publication approval. Vertical Express reserves the right to change specifications or design and to discontinue items without prior notice or obligation. ©2021 Vertical Express